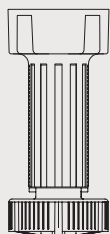


---

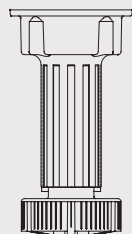
# Piedi regolabili Adjustable legs

## Piedi regolabili con basetta integrata Integral adjustable legs >

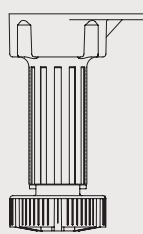
Pag.14



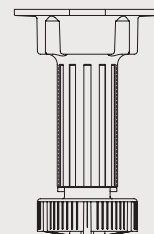
Serie 01



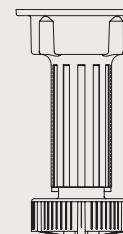
Serie 02



Serie 03

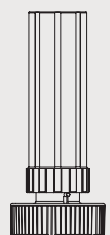


Serie 09



Serie S3

## Piedi regolabili con basetta Adjustable legs with base > Pag.23



Serie 04



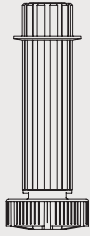
Serie 31

## Piedi regolabili con espansione integrata Adjustable legs with built-in expansion > Pag.33

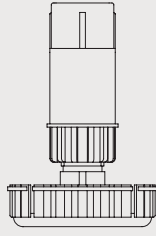


Serie 30

Serie speciali Special series > Pag.44



Serie T0



Serie 21



Serie 23



Serie 25

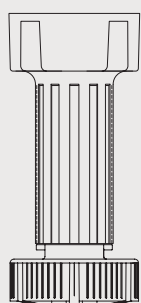
Piedi in alluminio Aluminium legs > Pag.56



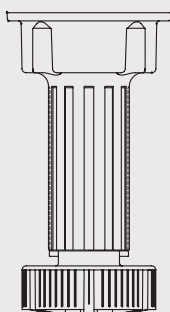
Serie 04

## Piedi regolabili con basetta integrata

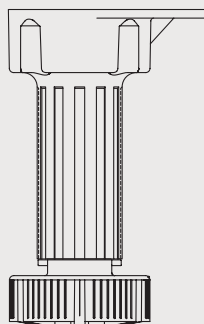
### Integral adjustable legs



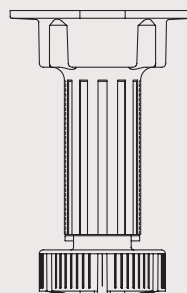
Serie 01  
pag.16



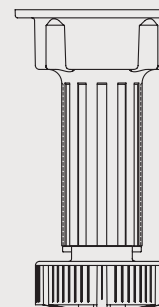
Serie 02  
pag.17



Serie 03  
pag.19



Serie 09  
pag.21



Serie S3  
pag.22

La Volpato Industrie offre una gamma completa di piedi regolabili studiati specificatamente per le basi dei mobili componibili, costituiti da:

- Piedi con basetta integrata
- Sistema tubi e basette
- Sistema aggancio zoccolo-piedi
- Sistema di regolazione Speed-system
- Sistema d'espansione Easy plug-in

I vari sistemi prevedono i più comuni metodi di fissaggio al cabinet. Sono realizzati in resina termoplastica ad alta resistenza agli urti e presentano le seguenti caratteristiche:

- Ottima resistenza meccanica
- Ottima resistenza all'umidità e all'invecchiamento
- Portata a compressione 400Kg./cad.

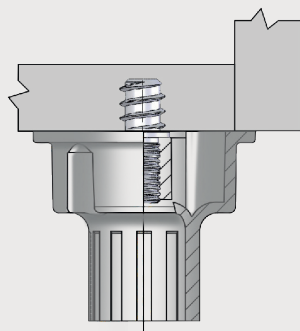
Adjustable legs: Volpato Industrie presents a wide range of adjustable legs specifically developed for modular kitchen cabinets. The series includes:

- legs with integrated base;
- leg with separated base systems ;
- plinth-leg connection systems;

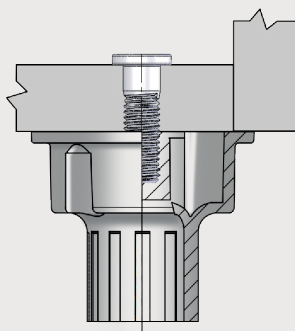
All systems are developed for the most common way of cabinet fixing. All systems, produced using thermoplastic resins, have the following features:

- superior mechanical resistance;
- superior resistance to humidity and aging;
- compression resistance higher than 400kg/leg

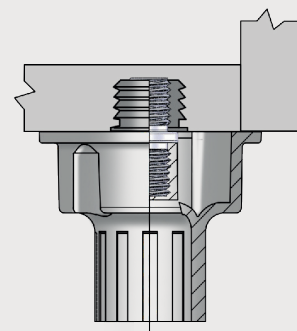
### Tipologia di fissaggio Fixing type



**1.** Perno autofilettante  
Self-tapping pin



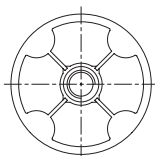
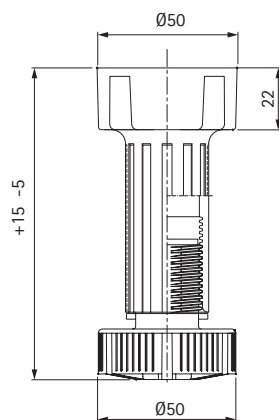
**2.** Vite passante  
Through screw



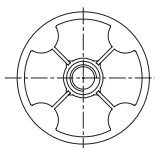
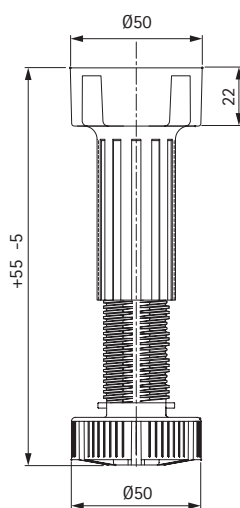
**3.** Perno filettato  
con bussola ad espansione  
Threaded pin with expansion dowel



## Serie 01 > Piedi regolabili con bassetta integrata Integral adjustable legs



Doppio principio  
Speed system



Doppio principio  
Speed system



Code	mm	pcs	kg	pcs
10/01.A100	100	300	16	15.000
10/01.A110	110	300	17	15.000
10/01.A120	120	250	15	15.000
10/01.A140	140	200	13	15.000
10/01.A150	150	200	14	15.000

Viti di fissaggio utilizzate  
Screws to be used

10/07.131 – pag.39

10/07.137 – pag.39

10/07.138 – pag.39

10/07.139 – pag.40

10/07.211 – pag.40

10/07.212 – pag.40

10/07.222 – pag.41



Code	mm	pcs	kg	pcs
10/01.R120	120-170	250	16	15.000
10/01.R140	140-190	200	14	15.000
10/01.R150	150-200	200	15	15.000

Viti di fissaggio utilizzate  
Screws to be used

10/07.131 – pag.39

10/07.137 – pag.39

10/07.138 – pag.39

10/07.139 – pag.40

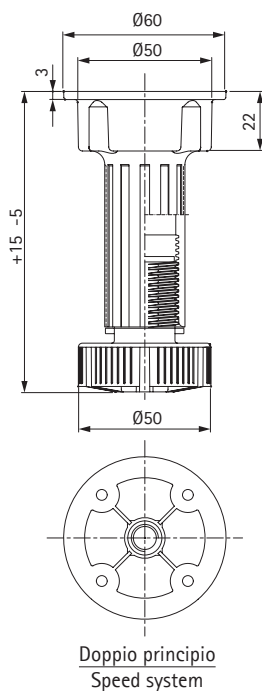
10/07.211 – pag.40

10/07.212 – pag.40

10/07.222 – pag.41

## Serie 02 >

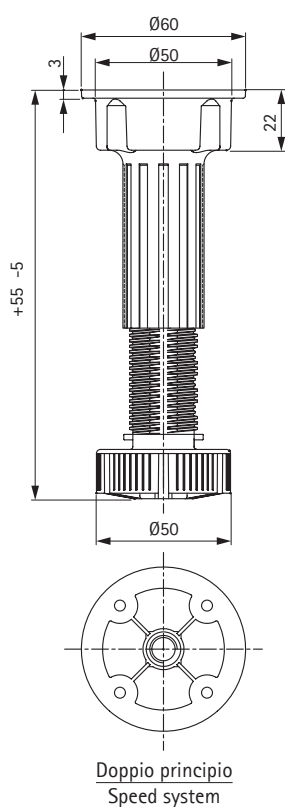
### Piedi regolabili con basetta integrata Integral adjustable legs



Code	mm	pcs	kg	pcs
10/02.A100	100	300	17	3.000
10/02.A110	110	300	18	3.000
10/02.A120	120	250	16	3.000
10/02.A140	140	200	14	3.000
10/02.A150	150	200	15	3.000

#### Viti di fissaggio utilizzate Screws to be used

10/07.131 – pag.39  
10/07.137 – pag.39  
10/07.138 – pag.39  
10/07.139 – pag.40  
10/07.211 – pag.40  
10/07.212 – pag.40  
10/07.222 – pag.41



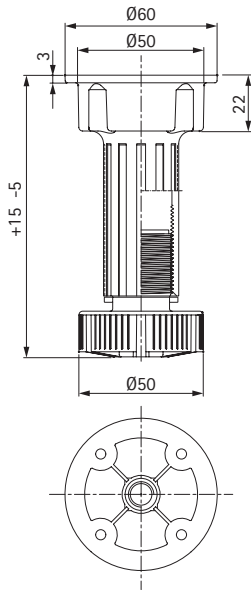
Code	mm	pcs	kg	pcs
10/02.R120	120-170	250	17	3.000
10/02.R140	140-190	200	15	3.000
10/02.R150	150-200	200	16	3.000

#### Viti di fissaggio utilizzate Screws to be used

10/07.131 – pag.39  
10/07.137 – pag.39  
10/07.138 – pag.39  
10/07.139 – pag.40  
10/07.211 – pag.40  
10/07.212 – pag.40  
10/07.222 – pag.41

## Serie 02 >

Piedi regolabili con basetta integrata Integral adjustable legs



Code	mm	pcs	kg	pcs
10/02.1105	100	300	18	3.000
10/02.1125	110	250	17	3.000
10/02.1155	150	200	16	3.000

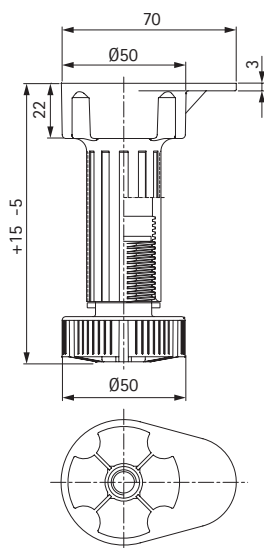
Viti di fissaggio utilizzate  
Screws to be used

- 10/07.111 – pag.41
- 10/07.121 – pag.41
- 10/07.122 – pag.42
- 10/07.124 – pag.42
- 10/07.125 – pag.42
- 10/07.128Z – pag.42
- 10/07.129 – pag.43

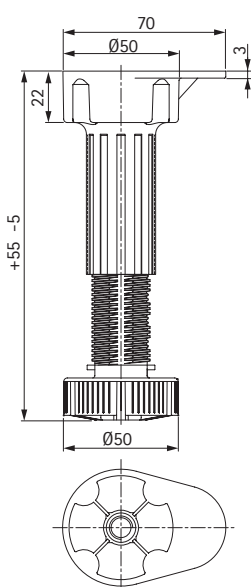


## Serie 03 >

### Piedi regolabili con basetta integrata Integral adjustable legs



Doppio principio  
Speed system



Doppio principio  
Speed system



Code	mm	pcs	kg	pcs
10/03.A400	100	300	17	15.000
10/03.A410	110	300	18	15.000
10/03.A420	120	250	16	15.000
10/03.A440	140	200	14	15.000
10/03.A450	150	200	15	15.000

#### Viti di fissaggio utilizzate Screws to be used

10/07.131 – pag.39  
10/07.137 – pag.39  
10/07.138 – pag.39  
10/07.139 – pag.40  
10/07.211 – pag.40  
10/07.212 – pag.40  
10/07.222 – pag.41

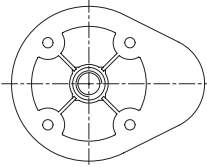
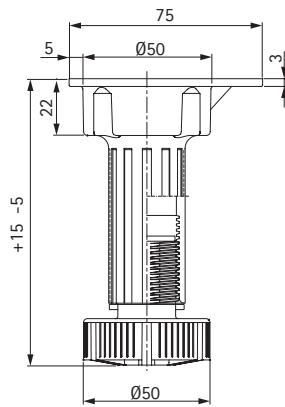


Code	mm	pcs	kg	pcs
10/03.R420	120-170	250	17	15.000
10/03.R440	140-190	200	15	15.000
10/03.R450	150-200	200	16	15.000

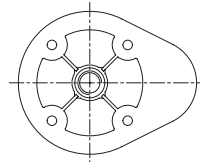
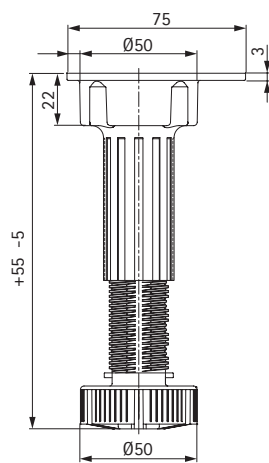
#### Viti di fissaggio utilizzate Screws to be used

10/07.131 – pag.39  
10/07.137 – pag.39  
10/07.138 – pag.39  
10/07.139 – pag.40  
10/07.211 – pag.40  
10/07.212 – pag.40  
10/07.222 – pag.41

## Serie 03 > Piedi regolabili con bassetta integrata Integral adjustable legs



Doppio principio  
Speed system



Doppio principio  
Speed system



Code

mm

pcs

kg

pcs

10/03.A700

100

300

18

15.000

10/03.A710

110

300

19

15.000

10/03.A720

120

250

17

15.000

10/03.A740

140

200

15

15.000

10/03.A750

150

200

16

15.000

Viti di fissaggio utilizzate  
Screws to be used

10/07.131 – pag.39

10/07.137 – pag.39

10/07.138 – pag.39

10/07.139 – pag.40

10/07.211 – pag.40

10/07.212 – pag.40

10/07.222 – pag.41



Code

mm

pcs

kg

pcs

10/03.R720

120-170

250

16

15.000

10/03.R740

140-190

200

16

15.000

10/03.R750

150-200

200

17

15.000

Viti di fissaggio utilizzate  
Screws to be used

10/07.131 – pag.39

10/07.137 – pag.39

10/07.138 – pag.39

10/07.139 – pag.40

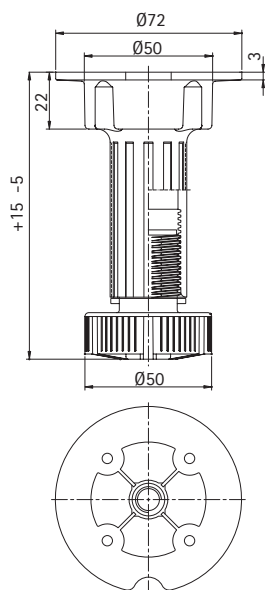
10/07.211 – pag.40

10/07.212 – pag.40

10/07.222 – pag.41

## Serie 09 >

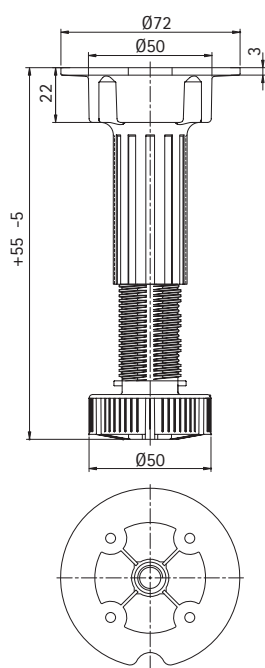
### Piedi regolabili con bassetta integrata Integral adjustable legs



Code	mm	pcs	kg	pcs
10/09.A080	80	300	16	15.000
10/09.A100	100	300	17	15.000
10/09.A120	120	250	16	15.000
10/09.A140	140	200	14	15.000
10/09.A150	150	200	15	15.000

#### Viti di fissaggio utilizzate Screws to be used

- 10/07.131 – pag.39
- 10/07.137 – pag.39
- 10/07.138 – pag.39
- 10/07.139 – pag.40
- 10/07.211 – pag.40
- 10/07.212 – pag.40
- 10/07.222 – pag.41



Code	mm	pcs	kg	pcs
10/09.R120	120-170	250	18	15.000
10/09.R140	140-190	200	15	15.000
10/09.R150	150-200	200	16	15.000

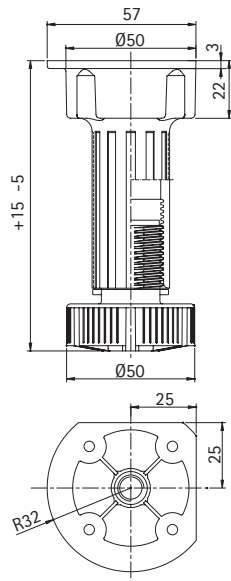
#### Viti di fissaggio utilizzate Screws to be used

- 10/07.131 – pag.39
- 10/07.137 – pag.39
- 10/07.138 – pag.39
- 10/07.139 – pag.40
- 10/07.211 – pag.40
- 10/07.212 – pag.40
- 10/07.222 – pag.41

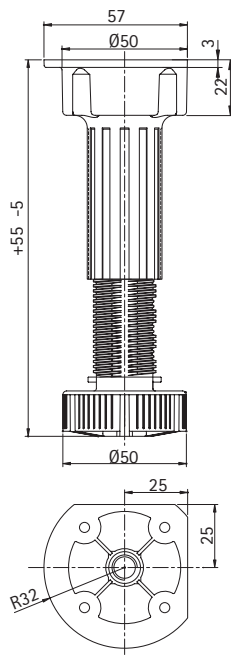
Doppio principio  
Speed system

## Serie S3 >

Piedi regolabili con basetta integrata Integral adjustable legs



Doppio principio  
Speed system



Doppio principio  
Speed system



Code	mm	pcs	kg	pcs
10/S3.A100	100	300	17	15.000
10/S3.A110	110	300	18	15.000
10/S3.A120	120	250	16	15.000
10/S3.A140	140	200	14	15.000
10/S3.A150	150	200	15	15.000

Viti di fissaggio utilizzate  
Screws to be used

10/07.131 – pag.39

10/07.137 – pag.39

10/07.138 – pag.39

10/07.222 – pag.41



Code	mm	pcs	kg	pcs
10/S3.R120	120-170	250	17	15.000
10/S3.R140	140-190	200	15	15.000
10/S3.R150	150-200	200	16	15.000

Viti di fissaggio utilizzate  
Screws to be used

10/07.131 – pag.39

10/07.137 – pag.39

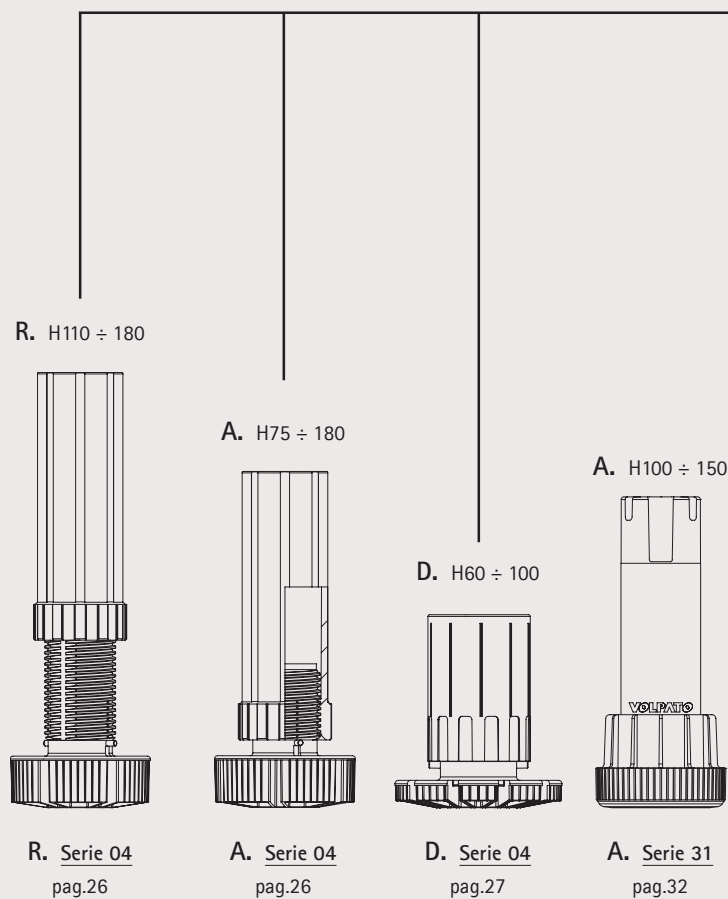
10/07.138 – pag.39

10/07.222 – pag.41

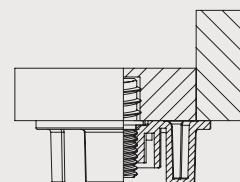
# Piedi regolabili con bassetta >

## Adjustable legs with base

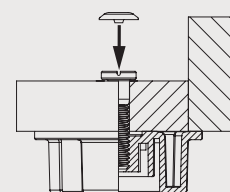
Sistema tubi e basette Serie 04 - Serie 31  
System tubes and bases



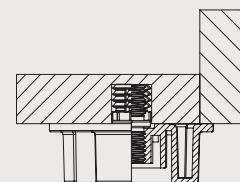
1. Perno autofilettante  
Self-tapping pin



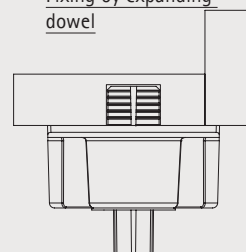
2. Vite passante  
Through screw



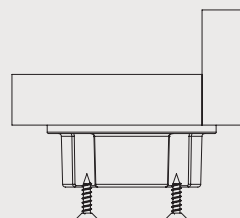
3. Perno filettato con  
bussola ad espansione  
Threaded pin with bushing  
expansion



4. Fissaggio ad espansione  
Fixing by expanding  
dowel



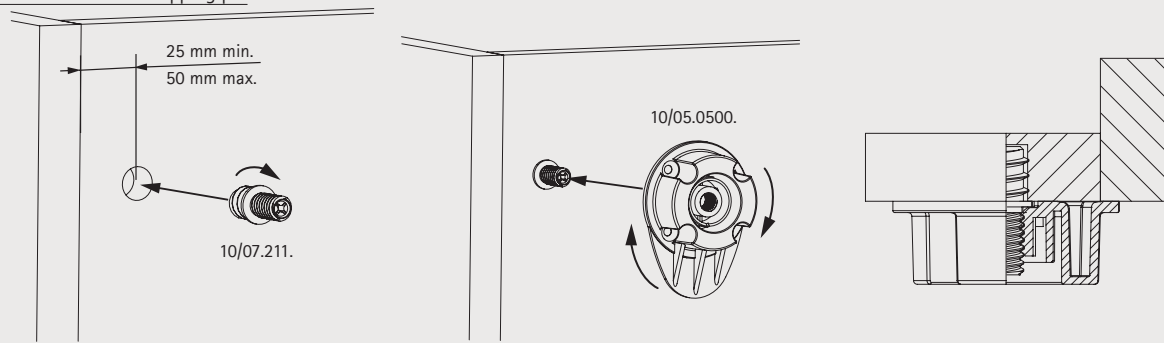
5. Vite autofilettante  
Self-tapping screw



## Sistema tubi e basette Serie 04 - Serie 31 System tubes and bases Serie 04 - Serie 31

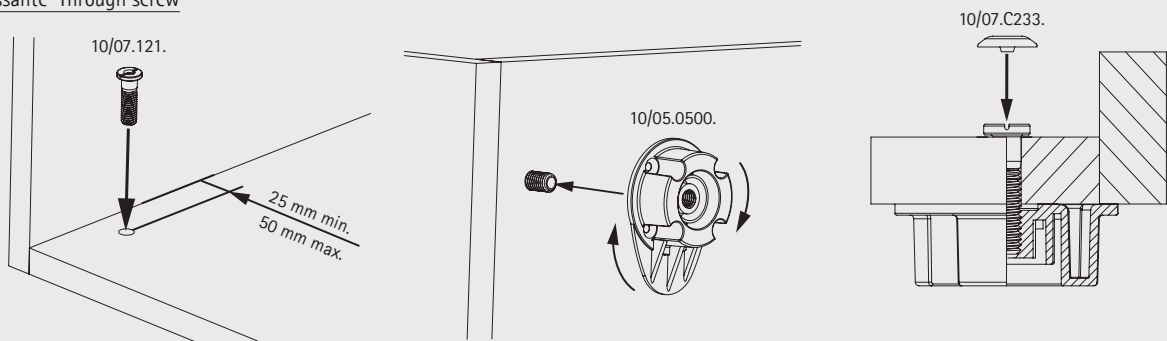
### 1. Perno autofilettante Self-tapping pin

> Step 1



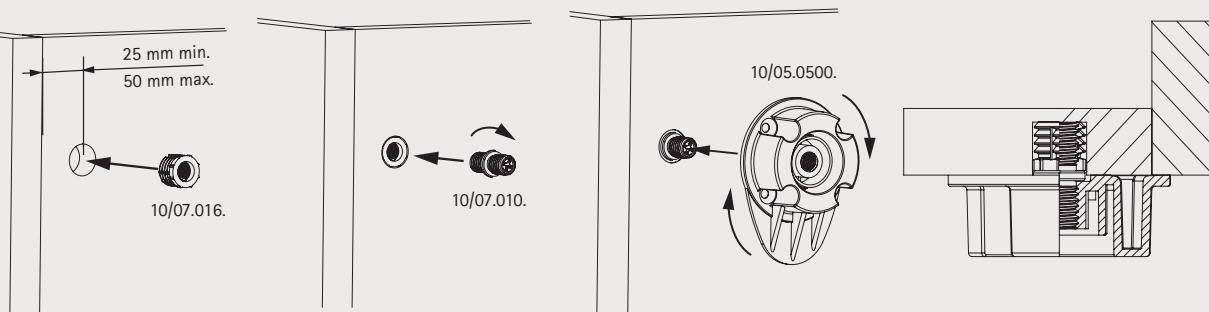
### 2. Vite passante Through screw

> Step 1



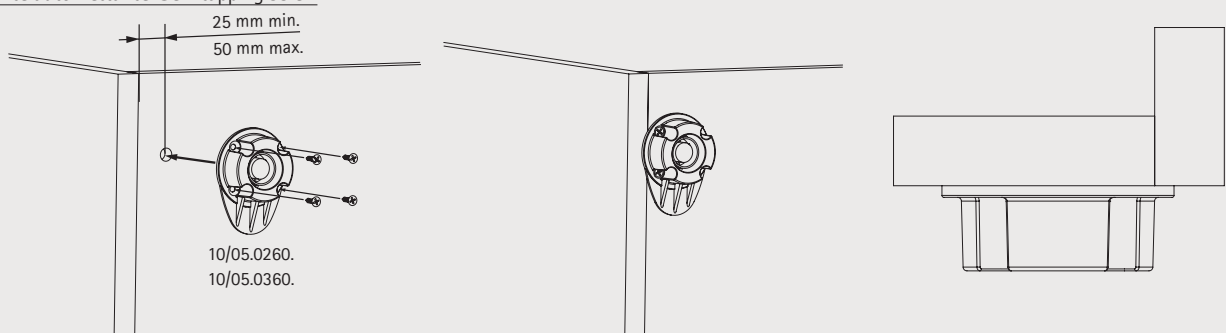
### 3. Perno filettato con bussola ad espansione Threaded pin with bush

> Step 1



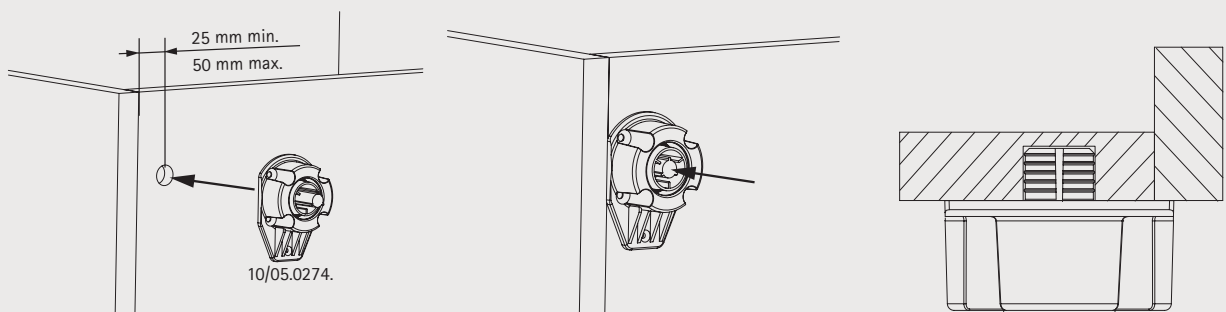
### 4. Vite autofilettante Self-tapping screw

> Step 1



### 5. Fissaggio ad espansione Fixing by expanding dowel

> Step 1

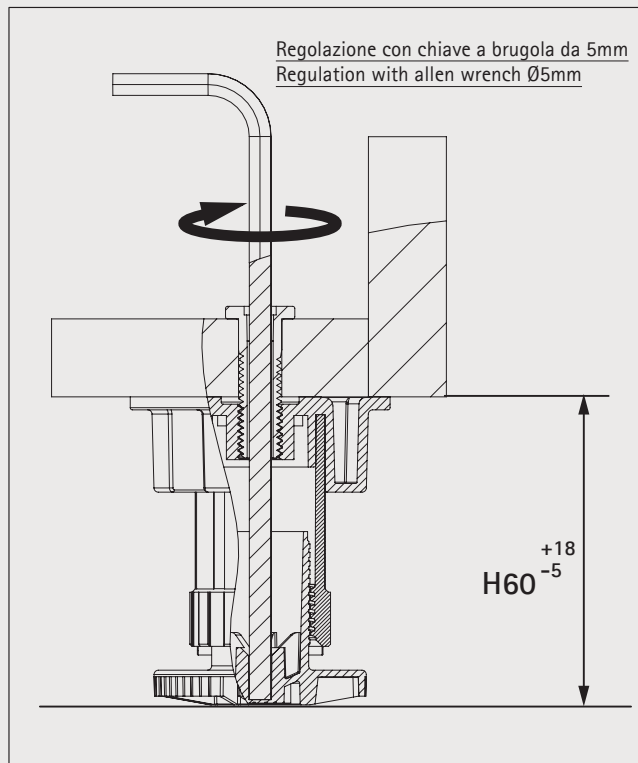
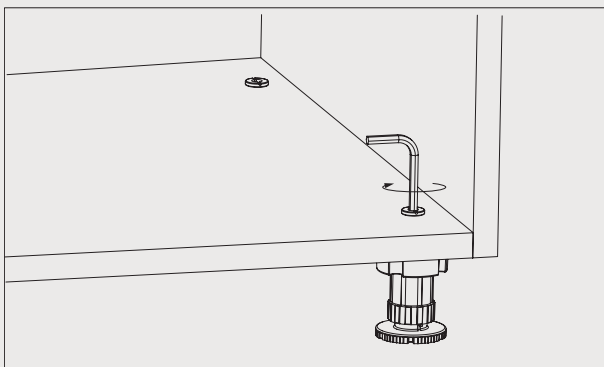
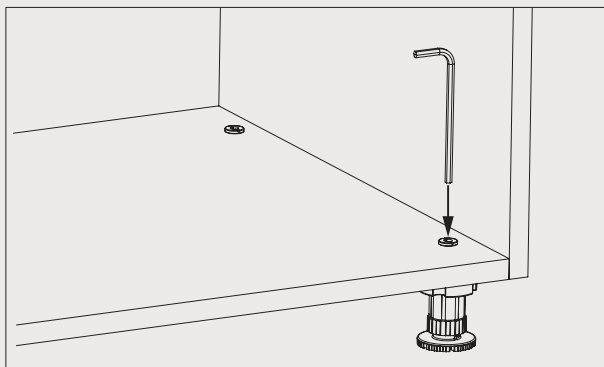


# Piedi regolabili con bassetta >

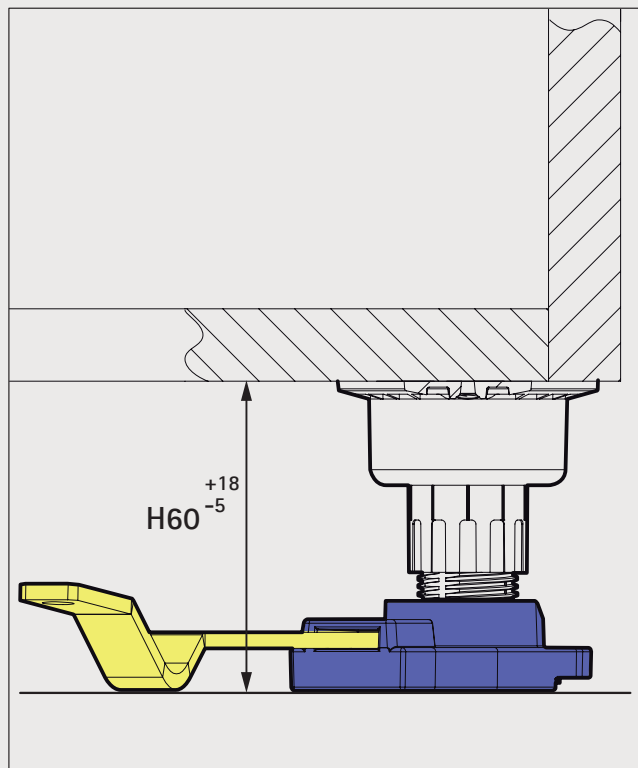
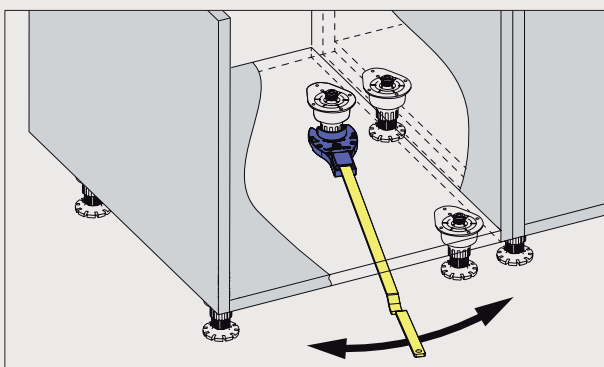
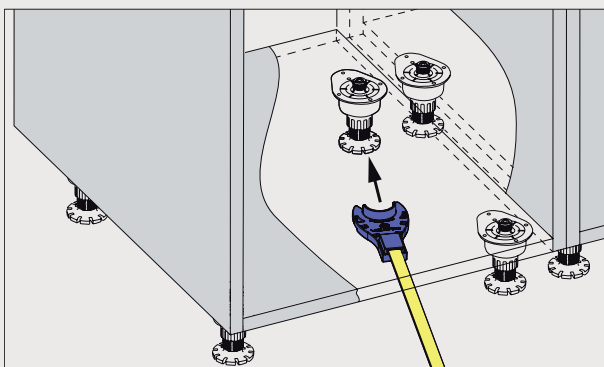
## Adjustable legs with base

Sistema tubi e basette  
Serie 04 H60 mm  
System tubes and bases

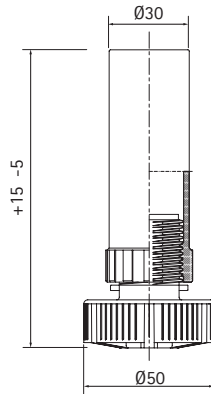
**A.** Fissaggio con vite forata M10 cod.10/07.121  
Fixing with perforated screw M10 cod. 10/07.121







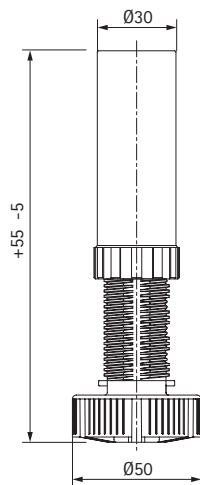
**B.** Regolazione con chiave EasyKey 15.01.002  
Regulation with EasyKey 15.01.002






## Serie 04 > Piedi regolabili con basetta Adjustable legs with base



Code				
	mm	pcs	kg	pcs
10/04.A075	75	400	12	4.000
10/04.A080	80	400	13	4.000
10/04.A090	90	400	14	4.000
10/04.A100	100	400	15	4.000
10/04.A110	110	400	16	4.000
10/04.A120	120	400	17	4.000
10/04.A130	130	400	18	4.000
10/04.A140	140	200	10	4.000
10/04.A150	150	200	10	4.000
10/04.A160	160	200	11	4.000
10/04.A170	170	200	11	4.000
10/04.A180	180	200	12	4.000

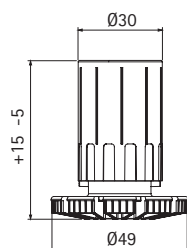


Code				
	mm	pcs	kg	pcs
10/04.R110	110-160	400	18	4.000
10/04.R120	120-170	400	19	4.000
10/04.R130	130-180	400	20	4.000
10/04.R140	140-190	200	11	4.000
10/04.R150	150-200	200	11	4.000
10/04.R160	160-210	200	12	4.000
10/04.R170	170-220	200	12	4.000
10/04.R180	180-230	200	13	4.000



## Serie 04 >

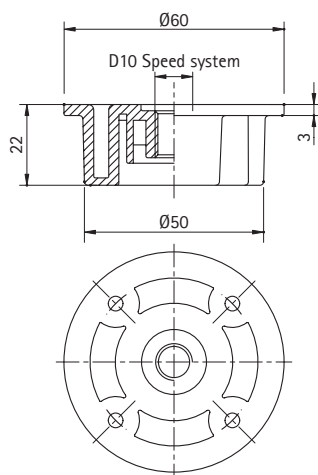
Piedi regolabili con basetta Adjustable legs with base



Code	mm	pcs	kg	pcs
10/04.D060	60	300	7	3.000
10/04.D070	70	300	7,5	3.000
10/04.D080	80	300	8	3.000
10/04.D100	100	300	9	3.000

Regolazione con chiave EasyKey 15.01.002  
Regulation with EasyKey 15.01.002

## Serie 04 > Basette Bases



Doppio principio  
Speed system

Code



pcs



kg



pcs

10/05.0400

400

10

4.000

Viti di fissaggio utilizzate

Screws to be used

10/07.131 – pag.39

10/07.137 – pag.39

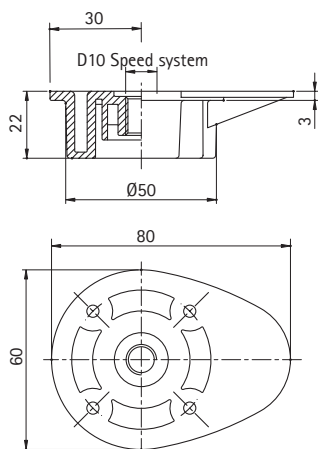
10/07.138 – pag.39

10/07.139 – pag.40

10/07.211 – pag.40

10/07.212 – pag.40

10/07.222 – pag.41



Doppio principio  
Speed system

Code



pcs



kg



pcs

10/05.0500

400

11

4.000

Viti di fissaggio utilizzate

Screws to be used

10/07.131 – pag.39

10/07.137 – pag.39

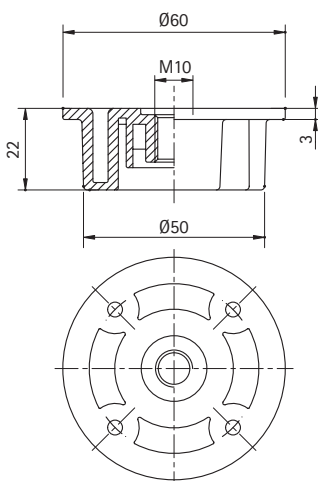
10/07.138 – pag.39

10/07.139 – pag.40

10/07.211 – pag.40

10/07.212 – pag.40

10/07.222 – pag.41



Code



pcs



kg



pcs

10/05.0251

400

10

4.000

Viti di fissaggio utilizzate

Screws to be used

10/07.111 – pag.41

10/07.121 – pag.41

10/07.122 – pag.42

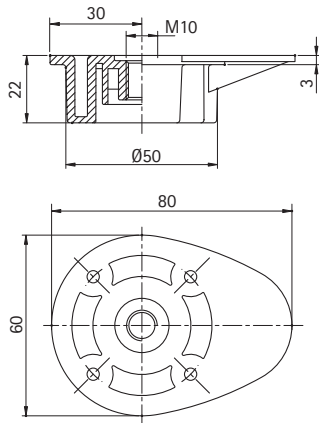
10/07.124 – pag.42




10/07.125 – pag.42

10/07.128Z – pag.42

10/07.129 – pag.43

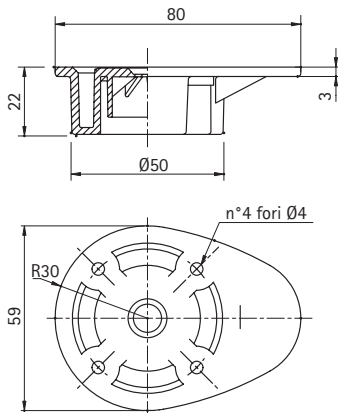
## Serie 04 > Basette Bases






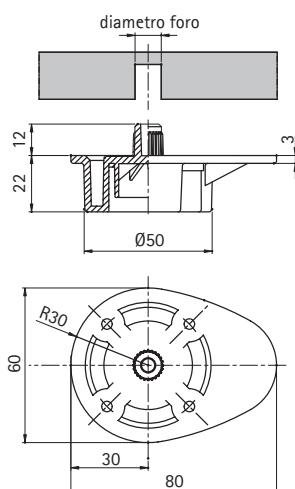
Code	 pcs	 kg	 pcs
10/05.0261	400	11	4.000





Viti di fissaggio utilizzate  
Screws to be used

- 10/07.111 – pag.41
- 10/07.121 – pag.41
- 10/07.122 – pag.42
- 10/07.124 – pag.42
- 10/07.125 – pag.42
- 10/07.128Z – pag.42
- 10/07.129 – pag.43



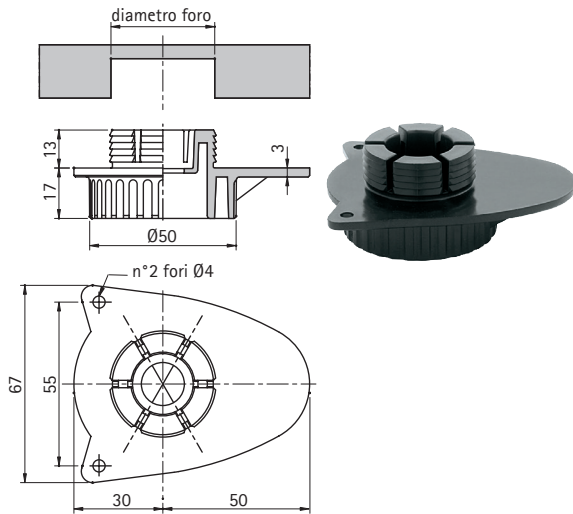
Code	 pcs	 kg	 pcs
10/05.0260	400	12	4.000







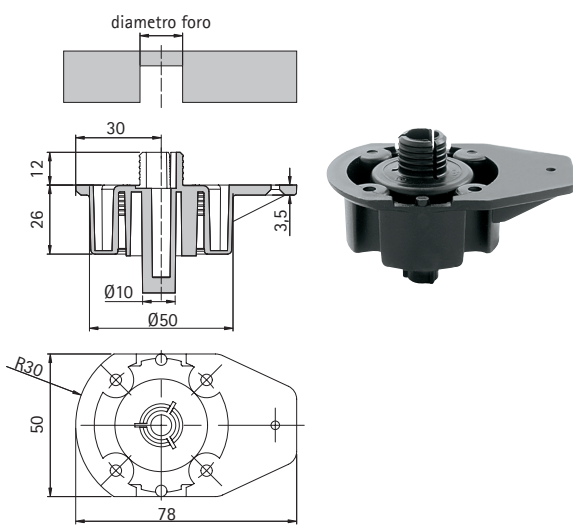
Code	 mm	 pcs	 kg	 pcs
10/05.0262	10	400	12	4.000





## Serie 04 >

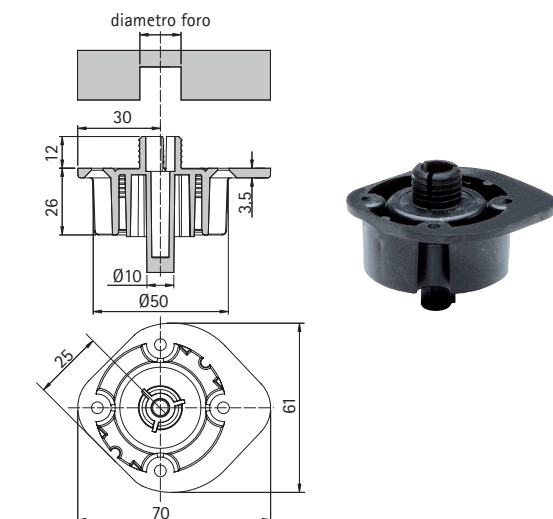
### Basette Bases







Code	 mm	 pcs	 kg	 pcs
10/05.0268	35	400	11	4.000



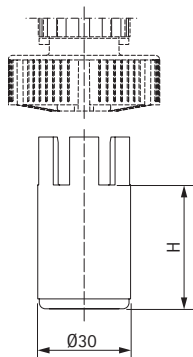
Code	 mm	 pcs	 kg	 pcs
10/05.0272	10	400	12	4.000
10/05.0273	15	400	14	4.000
10/05.0274	16	400	14	4.000
10/05.0275	13	400	14	4.000







Code	 mm	 pcs	 kg	 pcs
10/05.0282	10	400	12	4.000
10/05.0283	15	400	14	4.000
10/05.0284	16	400	14	4.000
10/05.0285	13	400	14	4.000

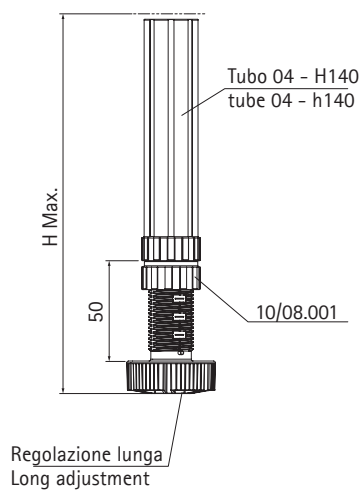
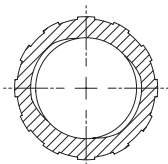
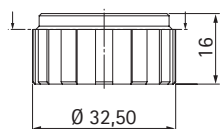
## Serie 04 >

### Basette Bases






Prolunga  
extension

Code	 mm	 pcs	 kg	 pcs
10/05.183	30	1.000	30	2.000
10/05.184	40	1.000	30	2.000
10/05.185	50	1.000	30	2.000



Regolazione lunga  
Long adjustment

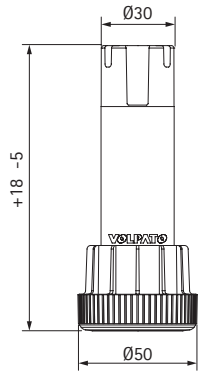
Code	 pcs	 kg	 pcs
10/08.001	1000	6	-

Fornita non montata  
Supplied unmounted

**Ghiera di serraggio.**  
Accessorio utile nel campo di altezze H>120mm  
con regolazione + 50 mm per bloccare e stabilizzare il piedino  
**Tightening ring nut.**  
Accessory useful for heights 120 mm and over  
with a +50 mm adjustment to lock and stabilize the leg.

## Serie 31 >

Piedi regolabili con basetta Adjustable legs with base



Code

mm

pcs

kg

pcs

10/31.A100

100

400

16

4.000

10/31.A120

120

400

17

4.000

10/31.A140

140

200

10

4.000

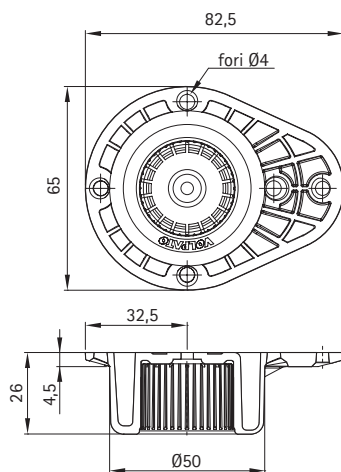
10/31.A150

150

200

10

4.000



Code

pcs

kg

pcs

10/05.0360

400

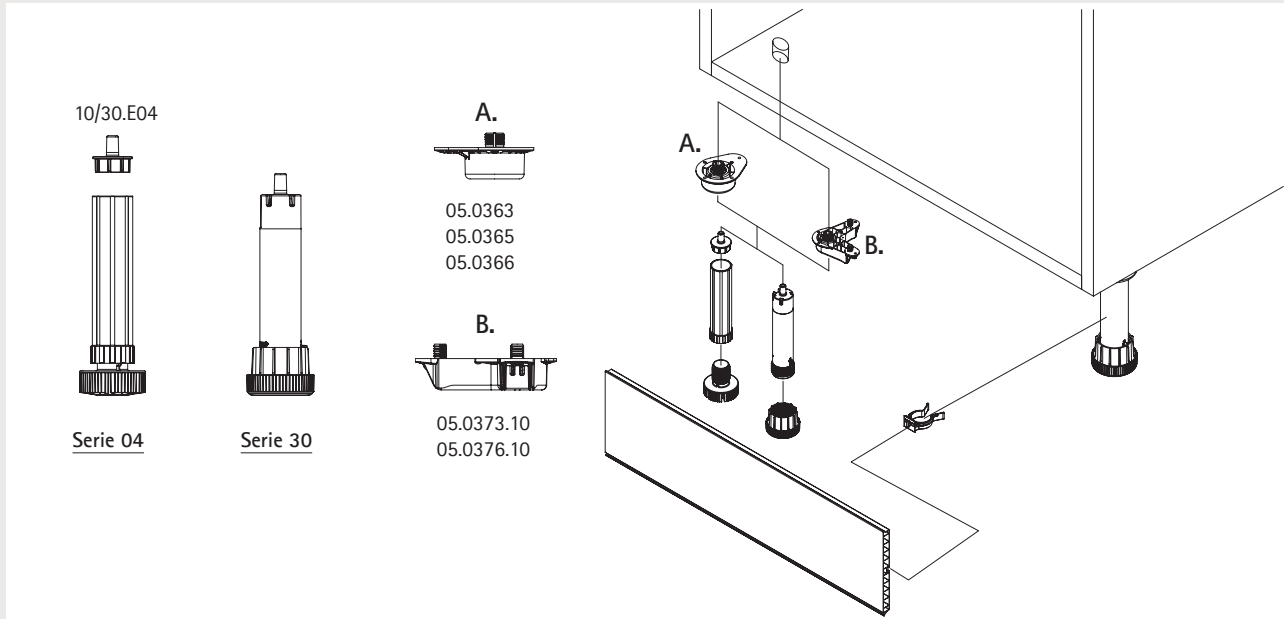
10

4.000

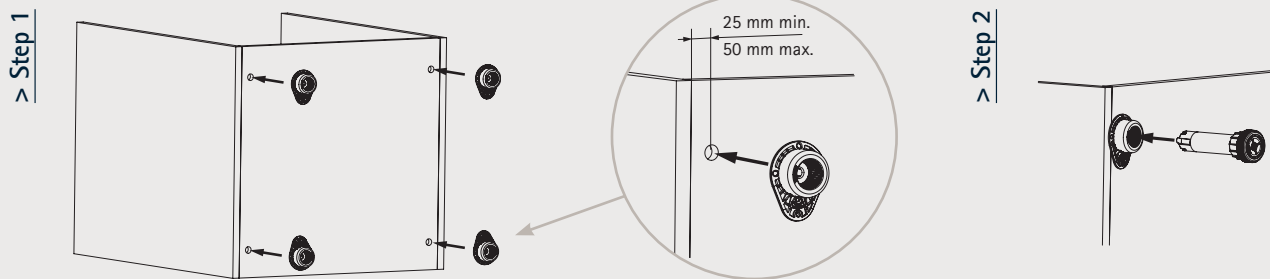
# Piedi regolabili con espansione integrata >

## Adjustable legs with built-in expansion

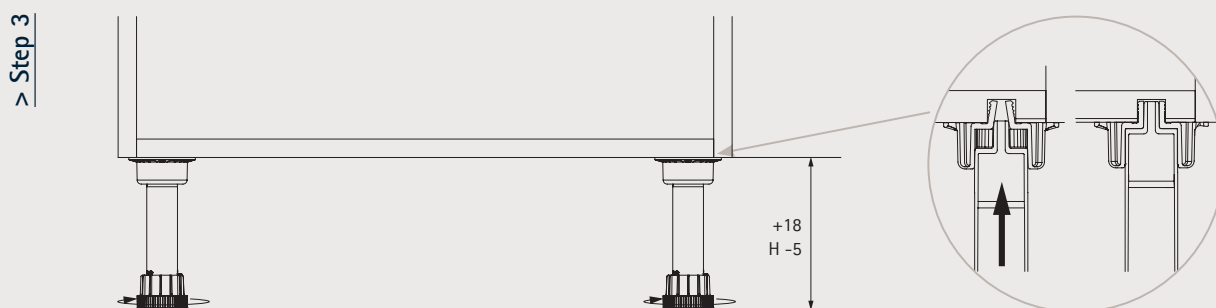
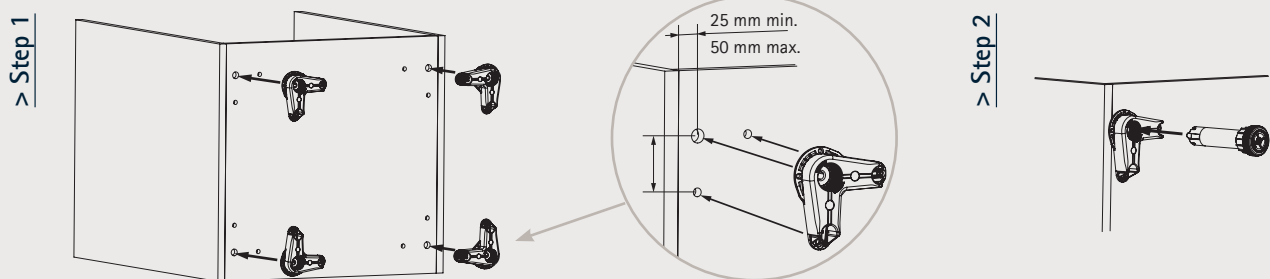
Tubi e basette Serie 30 - Serie 04  
Tubes and bases



### A. Serie 30

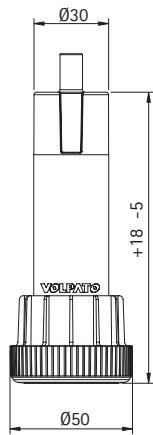


### B. Serie 30

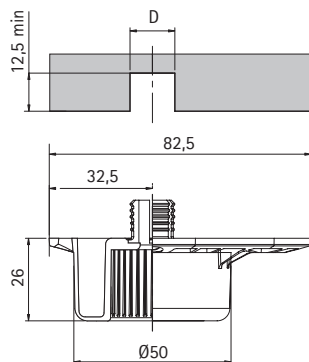


## Serie 30 >

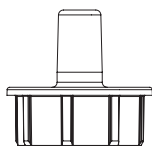
Tubi regolabili con espansione integrata Adjustable legs with built-in expansion



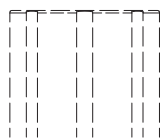
Code	mm	pcs	kg	pcs
10/30.A100	100	400	16	4.000
10/30.A120	120	400	17	4.000
10/30.A140	140	200	10	4.000
10/30.A150	150	200	10	4.000



Code	mm	pcs	kg	pcs
10/05.0363	13	400	10	4.000
10/05.0365	15	400	10	4.000
10/05.0366	16	400	10	4.000



Code	pcs	kg	pcs
10/30.E04	2000	10	4000



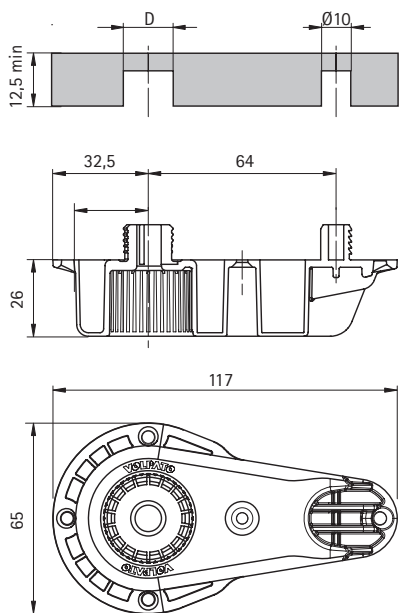
Espansione per tubo serie04 – pag.24  
Expanding solution tube serie04 – pag.24





Basette utilizzate  
Bases to be used

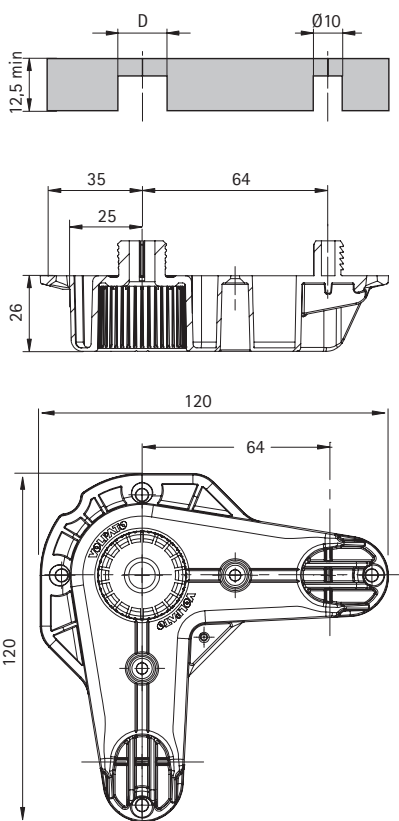
10/05.0363 – pag.34  
10/05.0365 – pag.34  
10/05.0366 – pag.34  
10/05.0383.10 – pag.35  
10/05.0386.10 – pag.35  
10/05.0373.10 – pag.35  
10/05.0376.10 – pag.35







**Serie 30 >** Tubi regolabili con espansione integrata Adjustable legs with built-in expansion



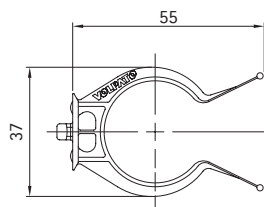
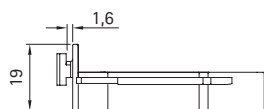
Code	 mm	 pcs	 kg	 pcs
10/05.0383.10	13	400	15	4.000
10/02.0386.10	16	400	15	4.000



Code	 mm	 pcs	 kg	 pcs
10/05.0373.10	13	200	15	4.000
10/05.0376.10	16	200	15	4.000

## Serie 06 >

### Ganci Clips

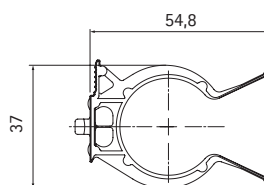
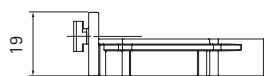


Per zoccoli in plastica e alluminio  
For plastic and aluminium plinths

Code	pcs	kg	pcs
10/06.151	2.000	10	4.000

Tubi utilizzati  
Tubes to be used

serie 01 pag.16 serie 09 pag.21 serie 30 pag.33  
serie 02 pag.17 serie S3 pag.22 serie 31 pag.32  
serie 03 pag.19 serie 04 pag.23 serie T0 pag.44



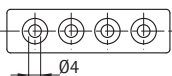
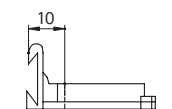
Sistema Gancio Easyfit  
Easyfit clip system

Per zoccoli in plastica e alluminio  
For plastic and aluminium plinths

Code	pcs	kg	pcs
10/06.155	2.000	10	4.000

Tubi utilizzati  
Tubes to be used

serie 01 pag.16 serie 09 pag.21 serie 30 pag.33  
serie 02 pag.17 serie S3 pag.22 serie 31 pag.32  
serie 03 pag.19 serie 04 pag.23 serie T0 pag.44

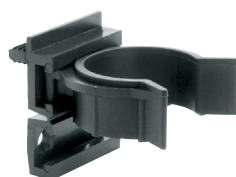
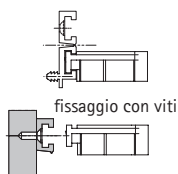


Per zoccoli in nobilitato  
For chipboard plinths

Code	pcs	kg	pcs
10/06.162	1.500	10	6.000

Tubi utilizzati  
Tubes to be used

serie 01 pag.16 serie 09 pag.21 serie 30 pag.33  
serie 02 pag.17 serie S3 pag.22 serie 31 pag.32  
serie 03 pag.19 serie 04 pag.23 serie T0 pag.44



Per zoccoli in nobilitato  
For chipboard plinths

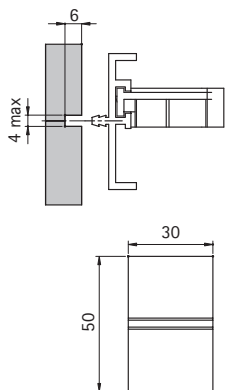
Code	pcs	kg	pcs
10/06.180	2.500	24	5.000

Tubi utilizzati  
Tubes to be used




serie 01 pag.16 serie 09 pag.21 serie 30 pag.33  
serie 02 pag.17 serie S3 pag.22 serie 31 pag.32  
serie 03 pag.19 serie 04 pag.23 serie T0 pag.44

## Serie 06 >

### Ganci Clips

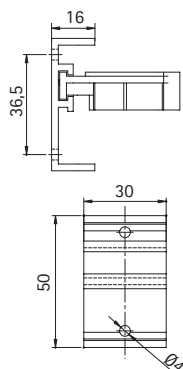


Per zoccoli in nobilitato  
For chipboard plinths




Code	 pcs	 kg	 pcs
10/06.175	2.500	34	5.000

Tubi utilizzati  
Tubes to be used

serie 01 pag.16	serie 09 pag.21	serie 30 pag.33
serie 02 pag.17	serie S3 pag.22	serie 31 pag.32
serie 03 pag.19	serie 04 pag.23	serie T0 pag.44

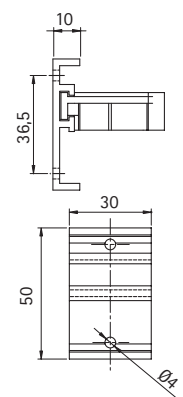


Per zoccoli in nobilitato  
For chipboard plinths




Code	 pcs	 kg	 pcs
10/06.172	2.500	32	5.000

Tubi utilizzati  
Tubes to be used

serie 01 pag.16	serie 09 pag.21	serie 30 pag.33
serie 02 pag.17	serie S3 pag.22	serie 31 pag.32
serie 03 pag.19	serie 04 pag.23	serie T0 pag.44

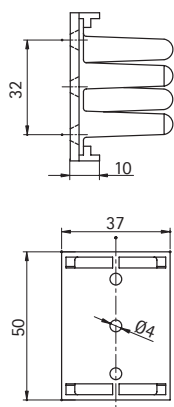


Per zoccoli in nobilitato  
For chipboard plinths




Code	 pcs	 kg	 pcs
10/06.171	2.500	30	5.000

Tubi utilizzati  
Tubes to be used

serie 01 pag.16	serie 09 pag.21	serie 30 pag.33
serie 02 pag.17	serie S3 pag.22	serie 31 pag.32
serie 03 pag.19	serie 04 pag.23	serie T0 pag.44



Per zoccoli in nobilitato  
For chipboard plinths

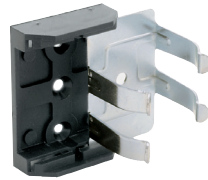
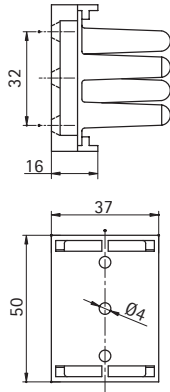
Code	 pcs	 kg	 pcs
10/06.141	2.000	47	6.000

Tubi utilizzati  
Tubes to be used




serie 01 pag.16	serie 09 pag.21	serie 30 pag.33
serie 02 pag.17	serie S3 pag.22	serie 31 pag.32
serie 03 pag.19	serie 04 pag.23	serie T0 pag.44

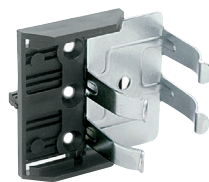
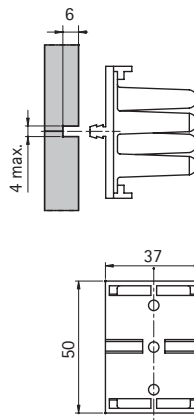
## Serie 06 >

### Ganci Clips






Per zoccoli in nobilitato  
For chipboard plinths

Code	 pcs	 kg	 pcs
10/06.142	1.000	28	6.000

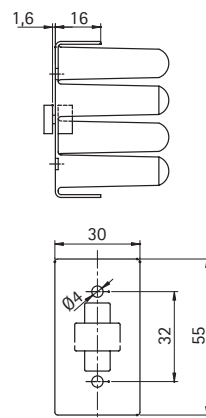


Per zoccoli in nobilitato  
For chipboard plinths




Code	 pcs	 kg	 pcs
10/06.145	2.000	48	6.000

Tubi utilizzati  
Tubes to be used

serie 01 pag.16    serie 09 pag.21    serie 30 pag.33  
serie 02 pag.17    serie S3 pag.22    serie 31 pag.32  
serie 03 pag.19    serie 04 pag.23    serie T0 pag.44

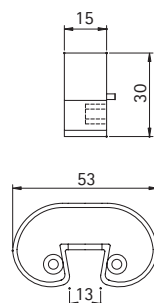


Per zoccoli in nobilitato  
For chipboard plinths




Code	 pcs	 kg	 pcs
10/06.159	500	15	5.000

Tubi utilizzati  
Tubes to be used

serie 01 pag.16    serie 09 pag.21    serie 30 pag.33  
serie 02 pag.17    serie S3 pag.22    serie 31 pag.32  
serie 03 pag.19    serie 04 pag.23    serie T0 pag.44

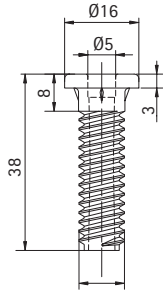


Gancio a molla  
Spring clip

Code	 pcs	 kg	 pcs
10/06.200	2.500	18	20.000

## Serie 07 >




### Viteria Screws



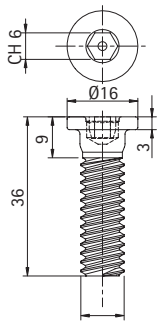
D10 Speed system



Doppio principio  
Speed system

Code	 pcs	 kg	 pcs
10/07.131	1.000	12	3.000




Vite forata  
Drilled screw



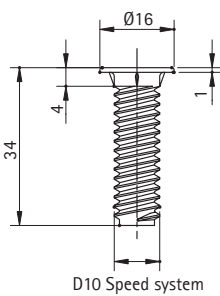
D10 Speed system



Doppio principio  
Speed system

Code	 pcs	 kg	 pcs
10/07.135	1.000	20	3.000




Vite testa piana esagono incassato  
Flat head screw hexagon socket



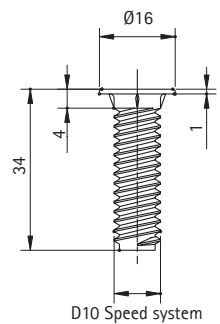
D10 Speed system



Doppio principio  
Speed system

Code	 pcs	 kg	 pcs
10/07.137	1.000	19	3.000




Vite testa piana brunita  
Screw flat head burnished



D10 Speed system

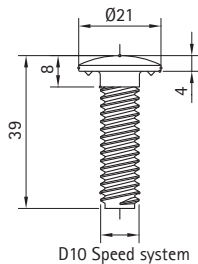


Doppio principio  
Speed system




Code	 pcs	 kg	 pcs
10/07.138	1.000	19	3.000

Vite testa piana zincata  
Flat head screw galvanized

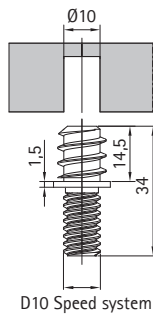
## Serie 07 > Viteria Screws






Doppio principio  
Speed system

Code	 pcs	 kg	 pcs
10/07.139	1.000	24	3.000

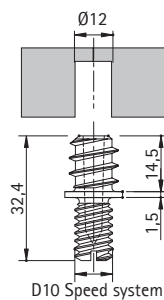
Vite testa cappello  
Screw head hat






Doppio principio  
Speed system

Code	 pcs	 kg	 pcs
10/07.211	1.000	12	3.000

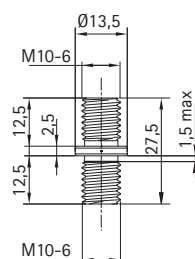
Perno autofilettante D.10 zincato  
D.10 pin tapping galvanized






Doppio principio  
Speed system

Code	 pcs	 kg	 pcs
10/07.212	1.000	14	3.000

Perno autofilettante D.12  
Pin tapping D.12

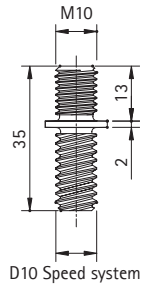


Code	 pcs	 kg	 pcs
10/07.010	1.000	20	3.000




Perno filettato M10  
Threaded pin M10

## Serie 07 >

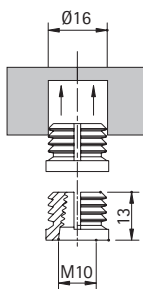
### Viteria Screws






Doppio principio  
Speed system

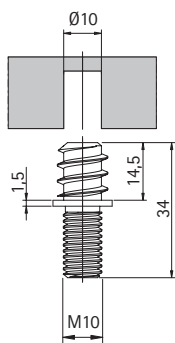
Code	 pcs	 kg	 pcs
10/07.222	1.000	12	3.000




Perno filettato M10  
Threaded pin M10



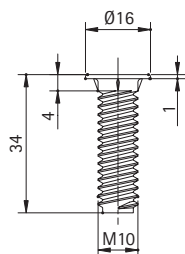
Code	 pcs	 kg	 pcs
10/07.016	5.000	2	5.000




Bussola espansione filettata M10  
Bush expansion threaded M10



Code	 pcs	 kg	 pcs
10/07.111	1.000	12	3.000

Perno filettato autobloccante zincato  
Threaded pin locking galvanized

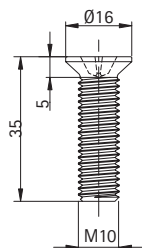


Code	 pcs	 kg	 pcs
10/07.121	1.000	18	3.000

Vite forata  
drilled screw

## Serie 07 >

### Viteria Screws



Code



pcs



kg



pcs

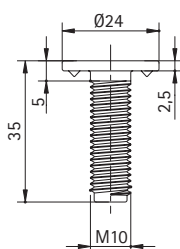
10/07.122

1.000

18

3.000

Vite testa piana svasata a croce  
Countersunk flat head screw Phillips



Code



pcs



kg



pcs

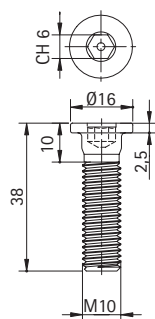
10/07.124

1.000

24

3.000

Vite testa piana larga  
Large flat head screw



Code



pcs



kg



pcs

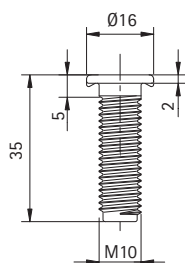
10/07.125

1.000

20

3.000

Vite testa piana sede esagonale  
Flat head screw hexagonal seat



Code



pcs



kg



pcs

10/07.128.Z

1.000

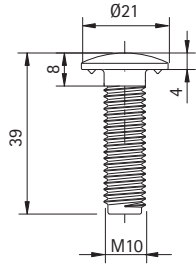
19




3.000

Vite testa piana zincata  
Flat head screw galvanized

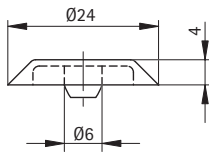


## Serie 07 > Viteria Screws



Code	 pcs	 kg	 pcs
10/07.129	1.000	24	3.000




Vite testa a cappello  
Screw head cap



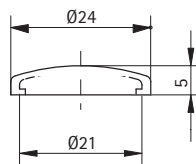
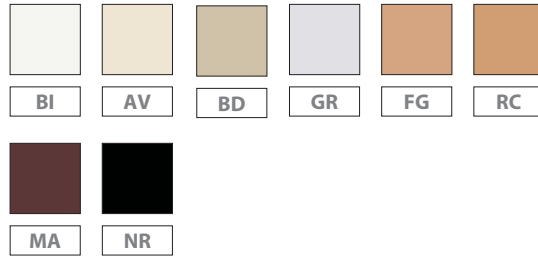
Tappo coprivite  
Screw cap

Screws to be used

10/07.131 – pag.39  
10/07.135 – pag.39  
10/07.121 – pag.41  
10/07.125 – pag.42

Code	 pcs	 kg	 pcs
10/07.C232	10.000	12	10.000




Colori disponibili  
Available colours



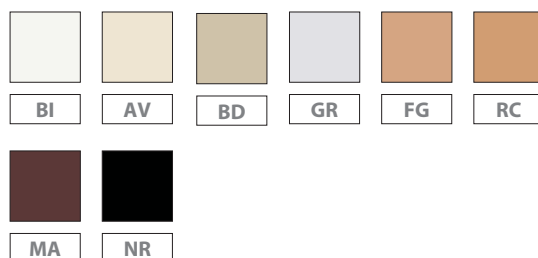
Tappo coprivite  
Screw cap

Screws to be used

10/07.139 – pag.40  
10/07.124 – pag.42  
10/07.129 – pag.43

Code	 pcs	 kg	 pcs
10/07.C233	10.000	12	10.000

Colori disponibili  
Available colours



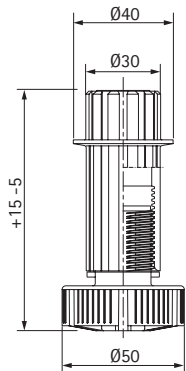
**Serie speciali**>  
Special series





Tubi e basette Serie T0-21-23-25  
Tubes and bases

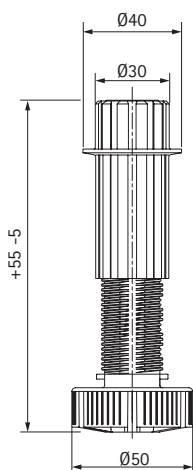






## Serie TO >

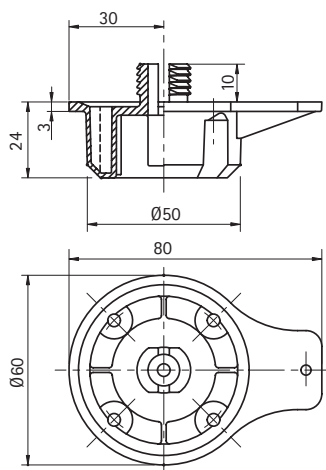
### Serie speciali Special series







Code	 mm	 pcs	 kg	 pcs
10/TO.A100	100	400	16	4.000
10/TO.A120	120	400	18	4.000
10/TO.A140	140	200	11	4.000
10/TO.A150	150	200	12	4.000

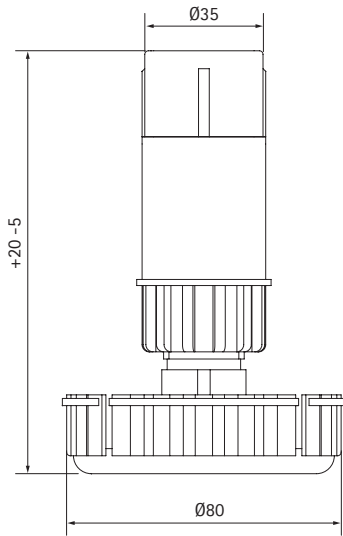






Code	 mm	 pcs	 kg	 pcs
10/TO.R100	100-150	400	18	4.000
10/TO.R120	120-170	400	21	4.000
10/TO.R140	140-190	200	12	4.000
10/TO.R150	150-200	200	13	4.000

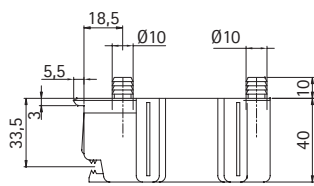






Code	 mm	 pcs	 kg	 pcs
10/05.0270	16	400	10	4.000

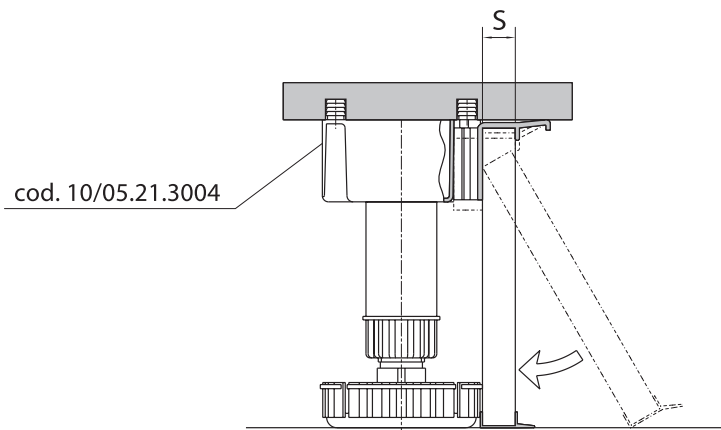
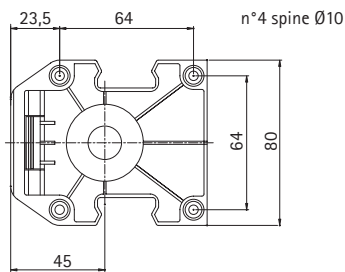
Serie 21 > Serie speciali Special series



Code				
	mm	pcs	kg	pcs
10/21.0080	80	300	17	6.000
10/21.0100	100	250	16	6.000
10/21.0121	121	200	14	6.000
10/21.0137	137	200	15	6.000
10/21.0150	150	150	13	6.000
10/21.0171	171	150	13	6.000
10/21.0180	180	150	14	6.000
10/21.0187	187	150	14	6.000
10/21.0200	200	120	10	6.000

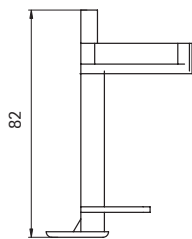
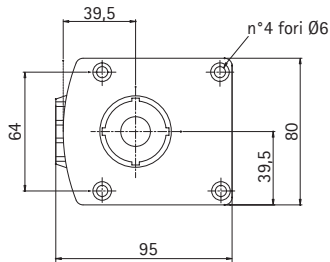
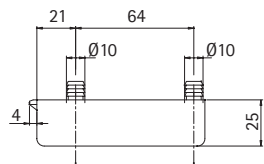
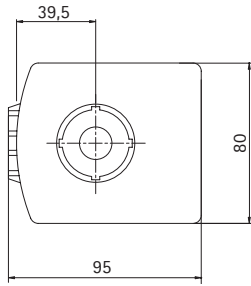
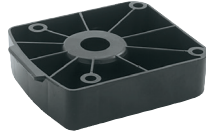
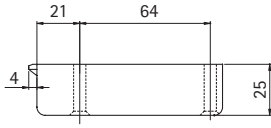


Code				
	mm	pcs	kg	pcs
10/05.21.3004	10	200	11	6.000



## Serie 21 >

### Serie speciali Special series



Per zoccoli in nobilitato  
For chipboard plinths



Code

pcs

kg

pcs

10/05.21.2000

300

15

6.000



Code

mm

pcs

kg

pcs

10/05.21.2500

10

250

14

6.000



Code

pcs

kg

pcs

10/06.21.3300

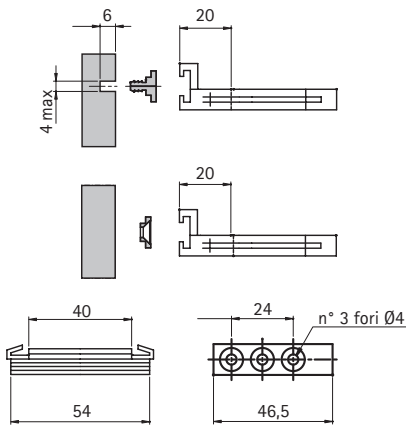
900

13




2.700

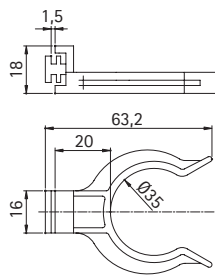
**Serie 21 >**

Serie speciali Special series






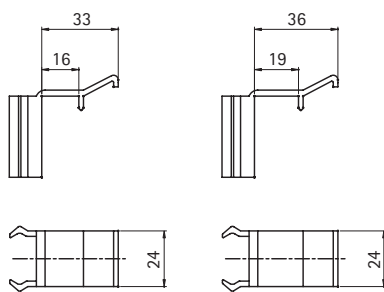
Per zoccoli in nobilitato  
For chipboard plinths

Code	 pcs	 kg	 pcs
10/06.21.3110	800	10	8.000






Per zoccoli in plastica e alluminio  
For plastic and aluminium plinths

Code	 pcs	 kg	 pcs
10/06.21.3115	2.000	20	8.000



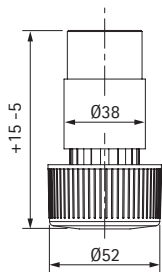
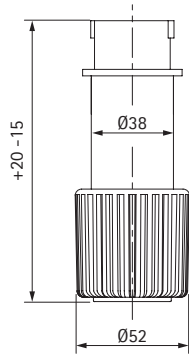
3116

3119

Code	 pcs	 kg	 pcs
10/06.21.3116	2.500	15	10.000
10/06.21.3119	2.500	16	10.000

## Serie 23 >

### Serie speciali Special series



Code

mm

pcs

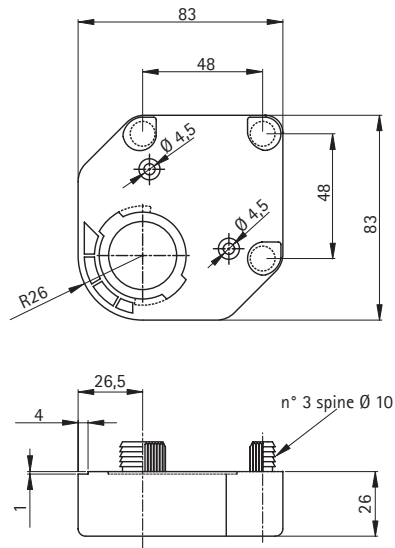
kg

pcs

10/23.0110	110	280	16	10.000
10/23.0130	130	250	16	10.000
10/23.0150	150	200	14	10.000
10/23.0170	170	190	14	10.000
10/23.0190	190	170	14	10.000
10/23.0210	210	150	13	10.000
10/23.0230	230	140	13	10.000
10/23.0250	250	130	16	10.000

10/23.0060	60	280	9	560
10/23.0070	70	280	11	560
10/23.0095	95	280	13,8	560

## Serie 23 > Serie speciali Special series



Code

pcs

kg

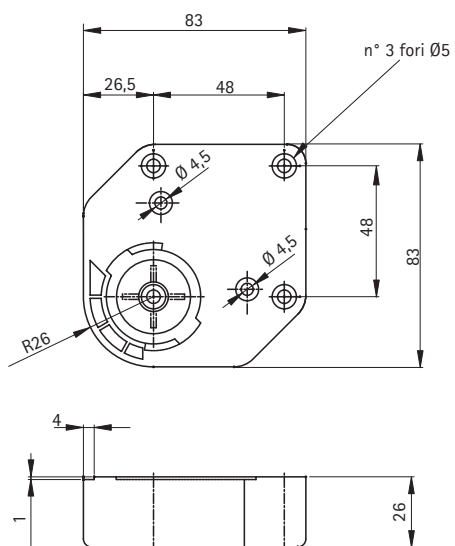
pcs

10/05.23.4050

300

14

12.000



Code

pcs

kg

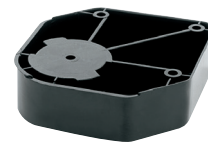
pcs

10/05.23.4051

400

16

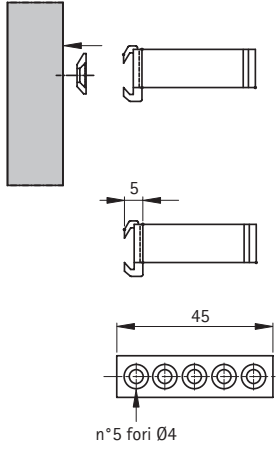
12.000






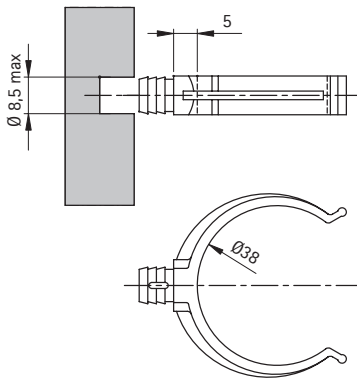





**Serie 23 >**

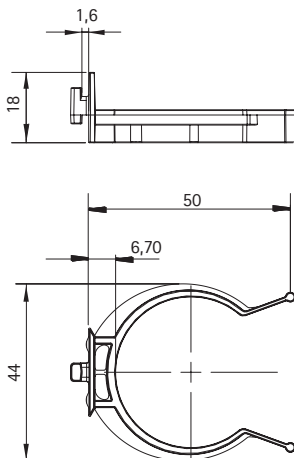
Serie speciali Special series






Code	 pcs	 kg	 pcs
10/06.1500	2.000	11	8.000



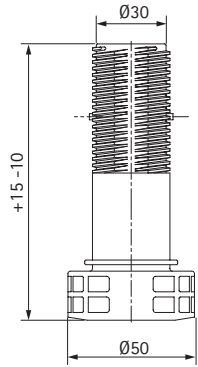
Code	 pcs	 kg	 pcs
10/06.1501	4.000	17	8.000



Code	 pcs	 kg	 pcs
10/06.1502	2.500	11	7.500

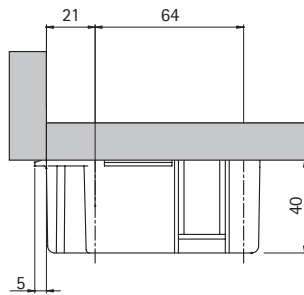
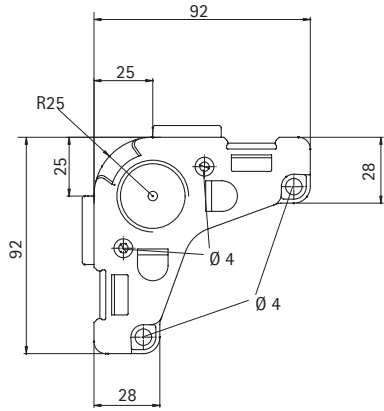
## Serie 25 >




Serie speciali Special series

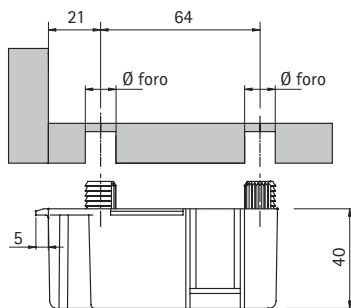
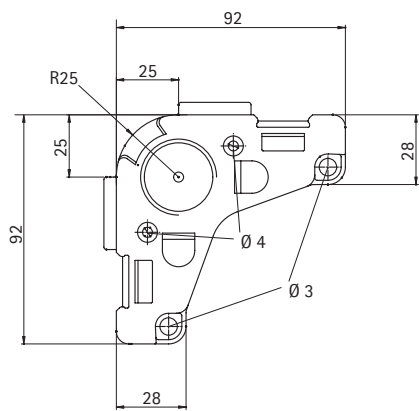






Code	mm	pcs	kg	pcs
10/25.0080	80	600	17	6.000
10/25.0090	90	600	18	6.000
10/25.0100	100	600	20	6.000
10/25.0110	110	600	21	6.000
10/25.0120	120	500	19	6.000
10/25.0130	130	500	20	6.000
10/25.0140	140	400	17	6.000
10/25.0150	150	400	18	6.000
10/25.0160	160	400	18	6.000
10/25.0170	170	300	14	6.000
10/25.0180	180	300	15	6.000
10/25.0190	190	300	16	6.000
10/25.0200	200	250	14	6.000
10/25.0210	210	200	12	6.000
10/25.0220	220	200	12	6.000

**Serie 25 >** Serie speciali Special series



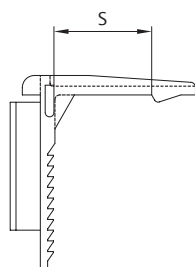
Code	 pcs	 kg	 pcs
10/05.25.1000	250	14	6.000







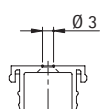
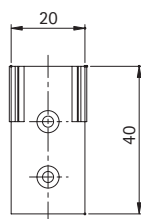
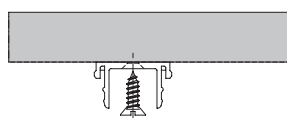
Code	 mm	 pcs	 kg	 pcs
10/05.25.1010	10	200	12	6.000
10/05.25.1012	12	200	12	6.000




## Serie 25 >

Serie speciali Special series



Code	 mm	 pcs	 kg	 pcs
10/06.2513	13	4.000	17	8.000
10/06.2516	16	4.000	17	8.000
10/06.2519	19	4.000	17	8.000



Code	 pcs	 kg	 pcs
10/06.2500	6.000	13	6.000