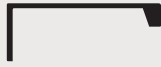


Profili maniglia
Handles profile

Profili maniglia
Handle profiles

Profili maniglia Handles profiles



Edn P00
pag.198



Tony P01
pag.199



Nemesia P02
pag.200



Tnt P03
pag.201



Calliope P04
pag.202



Gaia P05
pag.203

La Volpato Industrie propone una vasta gamma di maniglie realizzate su misura per qualunque larghezza di antine. I nostri profili sono realizzati tramite estrusione in lega di alluminio 6060 e successiva lavorazione per la personalizzazione finale, offrendo diverse soluzioni di design favorendo molteplici combinazioni per soddisfare e realizzare le vostre richieste, oltre a garantire una elevata semplicità di montaggio.

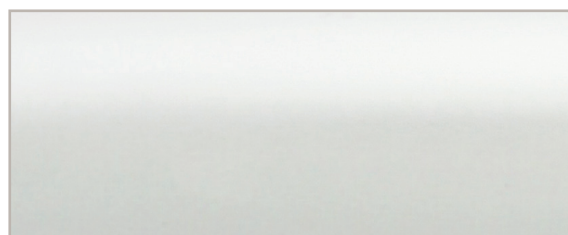
Volpato Industrie offers a wide range of handled custom made for all doors dimensions. Our profiles are made by extruded aluminum alloy 6060 and offer various design solutions always guaranteeing an easy installation.

Finiture Finishes

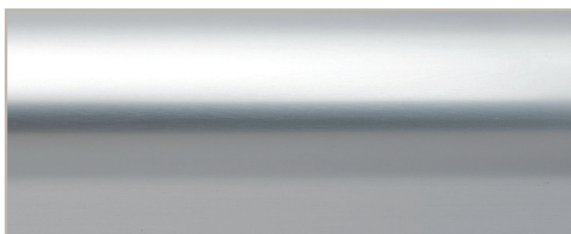
Per una reale valutazione, contattare il nostro ufficio tecnico-commerciale.
For a more precise colour evaluation, please contact our technical-commercial office.



– 00 anodizzato naturale - natural anodised



– 52 alluminio verniciato bianco - white varnished aluminium



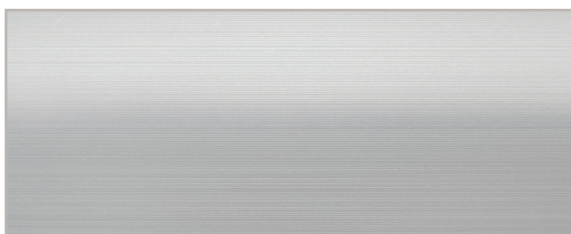
– 01 anodizzato lucido - glossy anodised



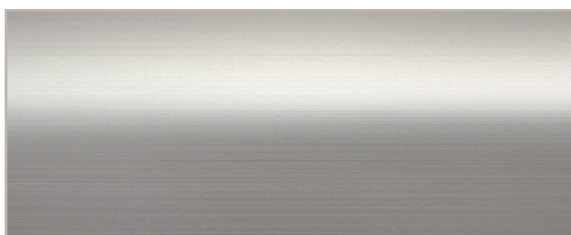
– 53 alluminio verniciato nero - black varnished aluminium



– 04 anodizzato acciaio - steel anodised



– 07 anodizzato naturale spazzolato - natural anodised brushed

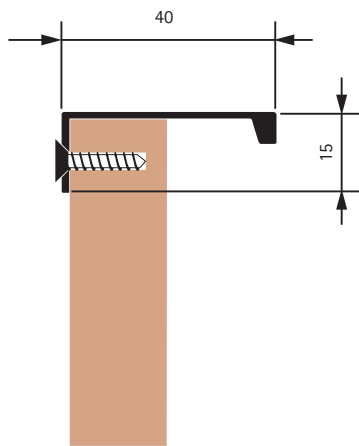


– 23 inox spazzolato - inox brushed

Serie P00 > Maniglia Edn Handle Edn



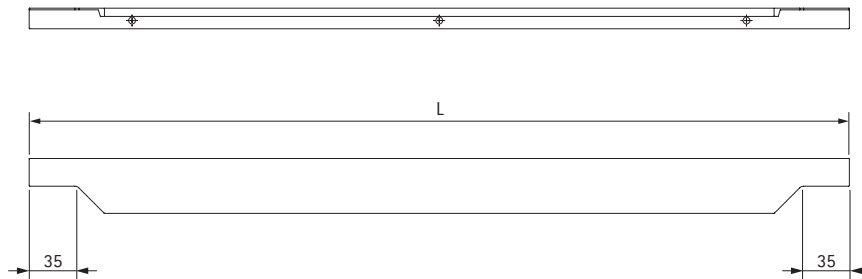
designed with  ARKO
antenne per mobili



Code	mm	pcs	-	-
M0/P00.XXXX	148÷798	--	--	--

Code	mm	pcs	-	-
M1/P00A.XXXX	148÷398	1 x M9/FC.0101	--	--
	598÷798	1 x M9/FC.0102	--	--

- Viti di fissaggio utilizzate: pag.196 - Screws to be used: pag.196

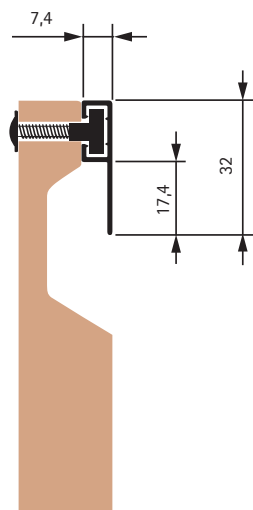


Misure personalizzabili a richiesta
 Custom measure available on demand

Serie P01 > Maniglia Tony Handle Tony



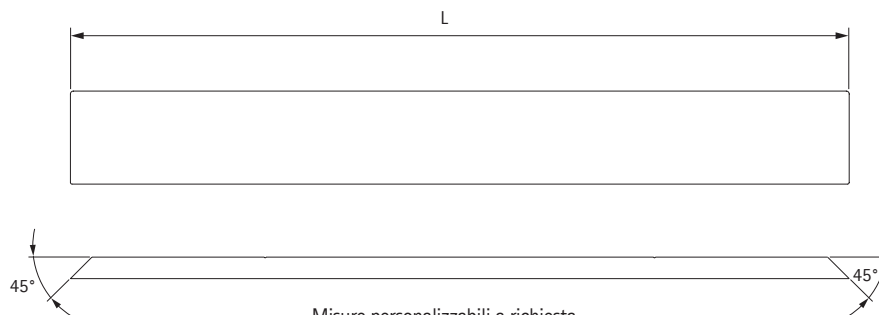
designed with  ARKO
arredo per mobili



Code	mm	pcs	-	-
M0/P01.XXXX	86÷1076	--	--	--

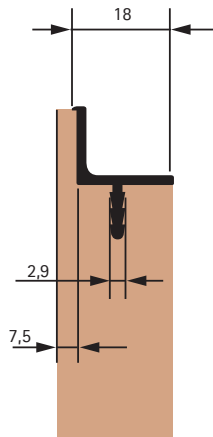
Code	mm	pcs	-	-
M1/P01A.XXXX	86÷376	1 x M9/FC.0001	--	--
	476÷676	1 x M9/FC.0002	--	--
	776÷876	2 x M9/FC.0001	--	--
	1076	1 x M9/FC.0001 1 x M9/FC.0002	--	--

- Viti di fissaggio utilizzate: pag.196 - Screws to be used: pag.196

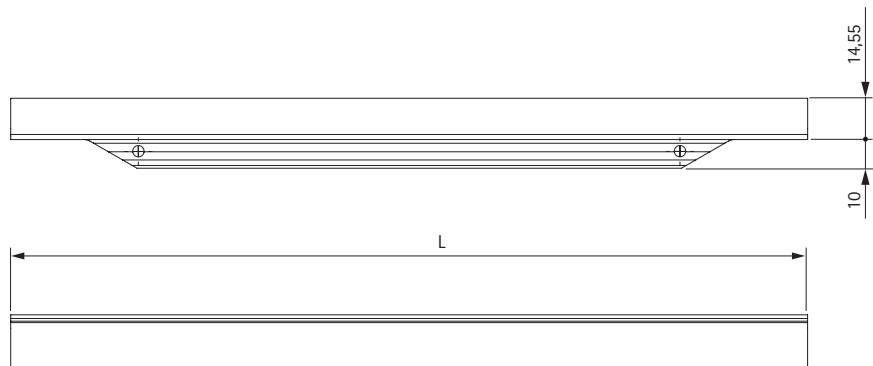


Misure personalizzabili a richiesta
Custom measure available on demand

Serie P02 > Maniglia Nemesia Handle Nemesia

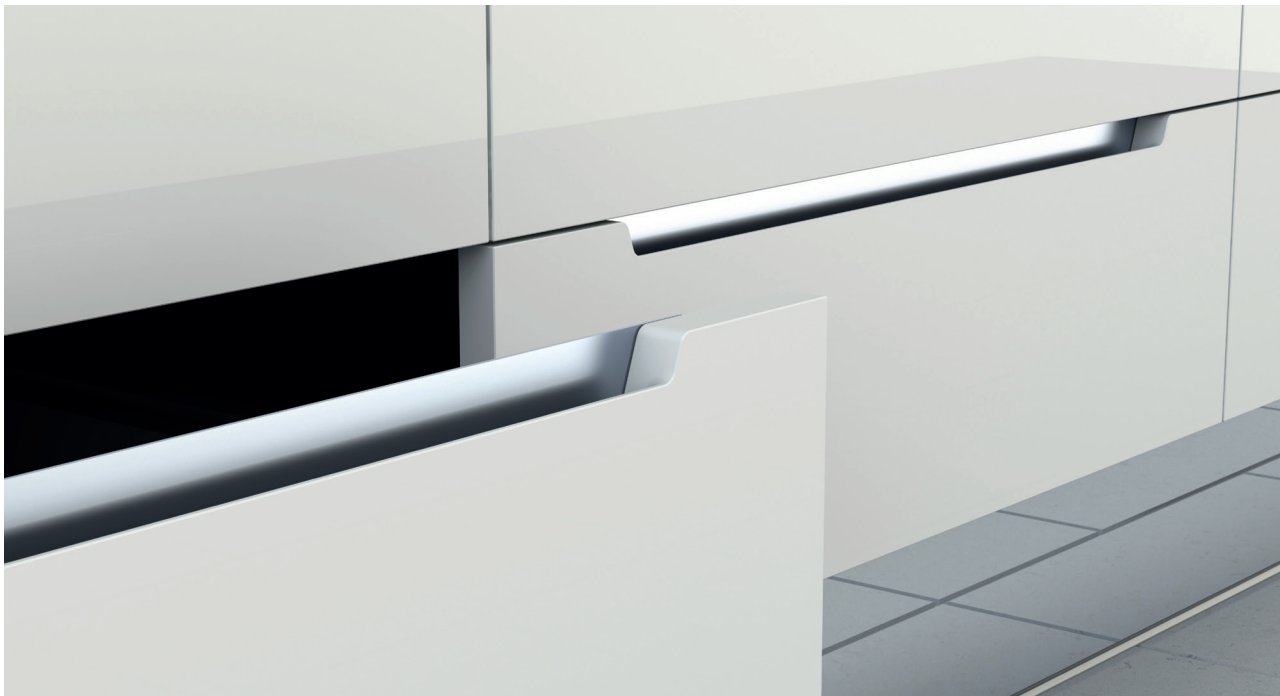


Code	mm	-	-	-
M0/P02.XXXX	--	--	--	--

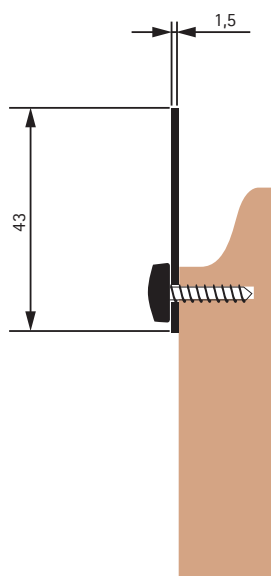


Misure personalizzabili a richiesta
 Custom measure available on demand

Serie P03 > Maniglia Tnt Handle Tnt



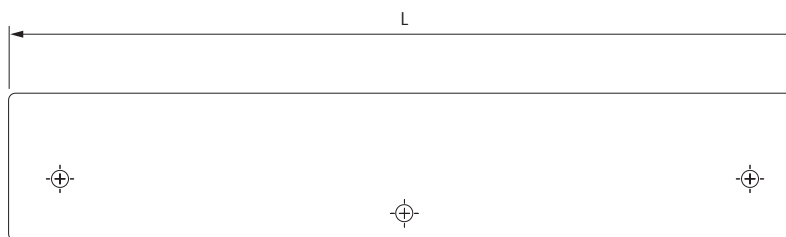
designed with  ARKO
arredo per mobili



Code	mm	pcs	-	-
M0/P03.XXXX	89÷1089	--	--	--

Code	mm	pcs	-	-
M1/P03A.XXXX	89÷189	1 x M9/FC.0201	--	--
	289÷489	1 x M9/FC.0202	--	--
	689÷789	2 x M9/FC.0201	--	--
	1089	2 x M9/FC.0202	--	--

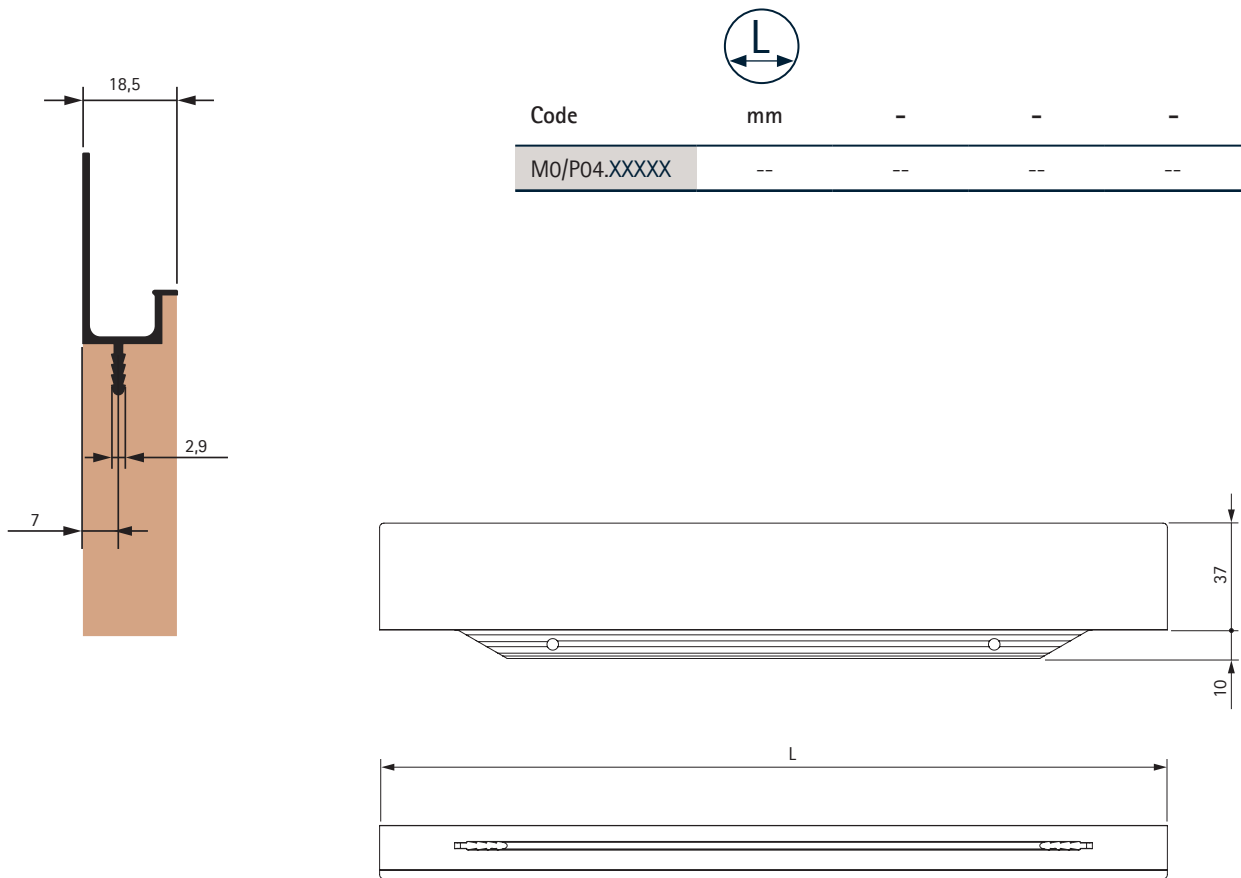
- Viti di fissaggio utilizzate: pag.196 - Screws to be used: pag.196



Misure personalizzabili a richiesta
 Custom measure available on demand

Serie P04 >

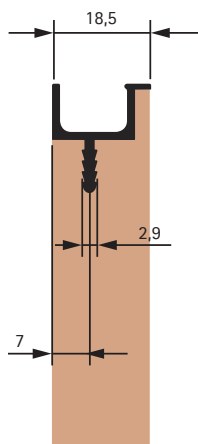
Maniglia Calliope Handle Calliope



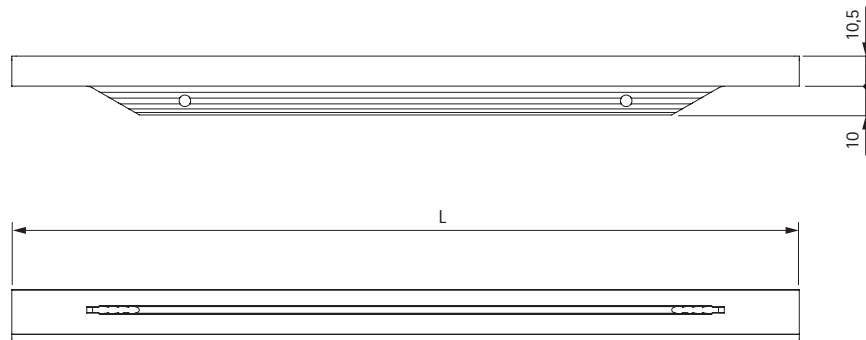
Code	mm	-	-	-
M0/P04.XXXXX	--	--	--	--

Misure personalizzabili a richiesta
 Custom measure available on demand

Serie P05 > Maniglia Gaia Handle Gaia



Code	mm	-	-	-
M0/P05.XXXXX	--	--	--	--



Misure personalizzabili a richiesta
Custom measure available on demand

Accessori Accessories >



Vite M4x15 TMT con inserti M4
Screw M4x15 TMT with insert M4



Code	pcs	-	-	-
M9/FC.0001	2	--	--	--
M9/FC.0002	3	--	--	--



Vite Ø3,5x16 TPS
Screw Ø3,5x16 TPS



Code	pcs	-	-	-
M9/FC.0101	2	--	--	--
M9/FC.0102	3	--	--	--

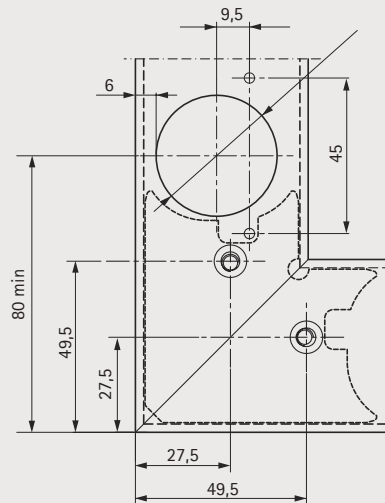
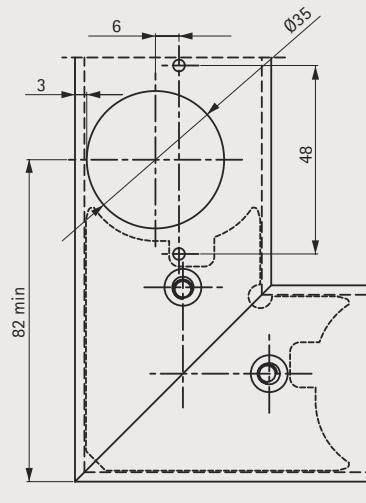


Vite Ø3,5x16 TC
Screw Ø3,5x16 TC



Code	pcs	-	-	-
M9/FC.0201	2	--	--	--
M9/FC.0202	3	--	--	--

Profili ante Door profiles

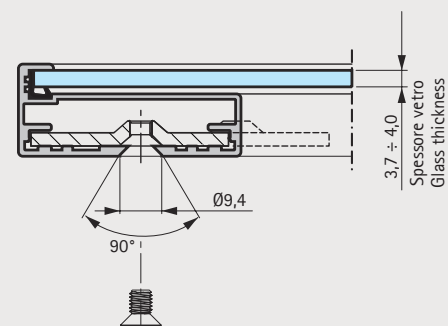
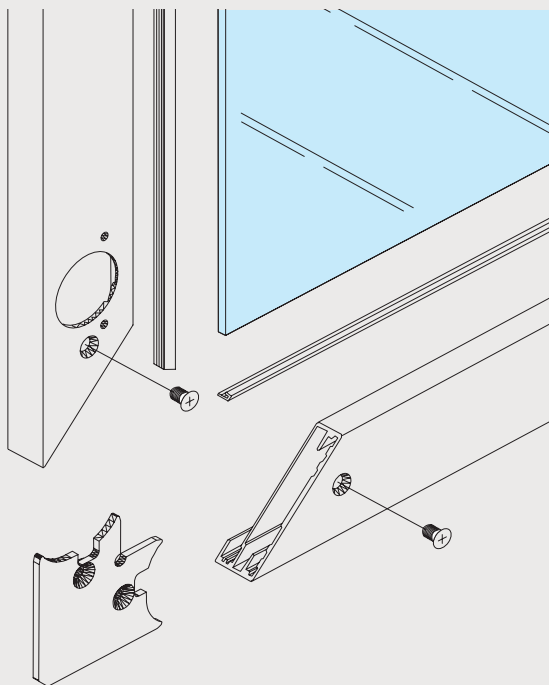


Sistema profilo ed accessori per la realizzazione di Ante Componibili in alluminio anodizzato naturale aventi le seguenti caratteristiche:

- Giunzione con taglio a 45° del profilo, unione con angolare interno in acciaio zincato e viti M5 sul retro per l'anta 50x20 e viti M4 per l'anta 20x20.
- Spessore dell'interno anta: vetro o altro materiale da 4mm.
- Utilizzo della guarnizione fermavetro in materiale plastico.

Profiles and accessories system for Modular door in natural and anodised aluminium, having the following characteristics:

- Junction with cut at 45° angle, junction with internal angle plate in galvanized steel and screw M5 on the back side for 50x20 door and screw M4 for 20x20 door.
- Depth of the internal side of the door: glass or other material of 4mm
- Glass stopper in rubber.

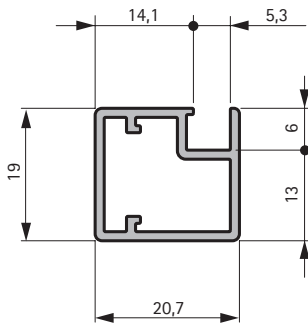




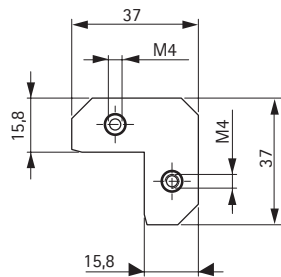
Profili maniglia
Handle profiles

Serie 21 >

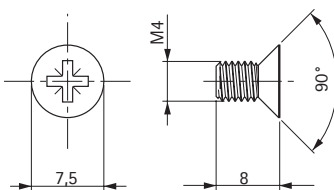
Profili ante 20x20 Door profiles 20x20



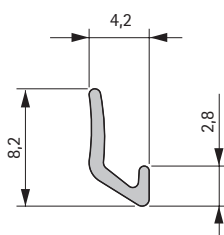
Profilo 20x20
Profile 20x20



Angolare
Angular



Vite M5x8
Screw M5x8



Guarnizione
Gasket



Code	mm	m	kg	m
80/21.20	5.000	50	33	100

Finitura alluminio
00 anodizzato naturale
01 anodizzato lucido
04 anodizzato acciaio
07 anodizzato naturale spazzolato

Aluminium finish:
00 natural anodised
01 glossy anodised
04 steel anodised
07 natural brushed anodised



Code	pcs	kg	pcs
85/05.020	100	10	200

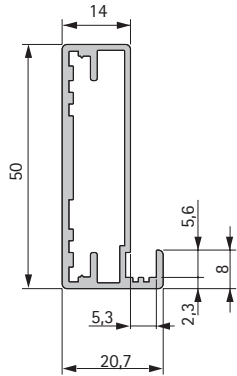


Code	pcs	kg	pcs
85/07.082	200	0,3	400



Code	pcs	kg	pcs
80/21.9004	250	4	250

Serie 21 > Profili ante 50x20 Door profiles 50x20



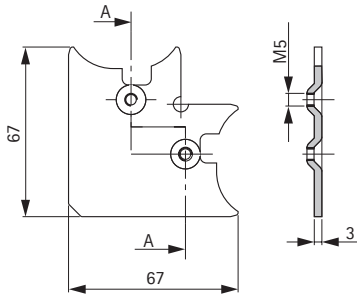
Profilo 50x20
Profile 50x20



Code	mm	m	kg	m
80/21.50	5.000	50	33	100

Finitura alluminio
 00 anodizzato naturale
 01 anodizzato lucido
 04 anodizzato acciaio
 07 anodizzato naturale spazzolato

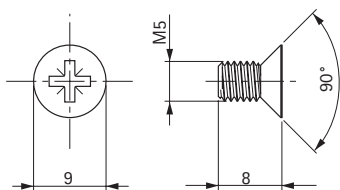
Aluminium finish:
 00 natural anodised
 01 glossy anodised
 04 steel anodised
 07 natural brushed anodised



Angolare
Angular



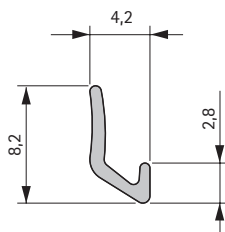
Code	pcs	kg	pcs
85/05.2150	100	10	200



Vite M5x8
Screw M5x8



Code	pcs	kg	pcs
85/07.081C	200	0,3	400



Guarnizione
Gasket



Code	pcs	kg	pcs
80/21.9004	250	4	250