



DOMUS LINE
L I G H T S T Y L E

EN



HIPSO

From chaos to order



HIPSO

From chaos to order

HIPSO is a luminaire that transforms a spotlight into a square trace of light. A miniaturised, compact ring of light with extremely high visual comfort, with a central part for housing a control system that responds to the user's needs and well-being.

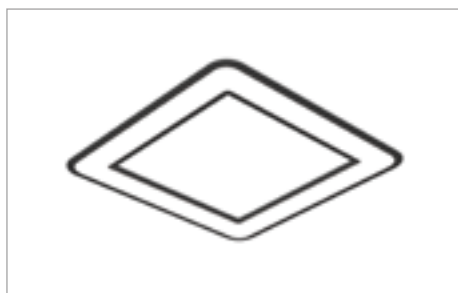
HIPSO springs from the need to design a luminaire made of modular and mutually integrable elements to simplify and create a clean and harmonious effect.

The light is distributed by integrating a perimeter source in a slim luminaire which, in the "blind hole" configuration, dematerialises, leaving the light to trace the shape of the luminaire on its own.



The decomposition of the luminaire is combined with modularity, allowing many different configurations of an object that can be installed in normal or milled grooves or blind holes, with integrated switch or support for surface installation. Each module can be combined with a standard power supply or light flow and colour temperature control systems to form appealing compositions and, depending on the models, create charming light effects.

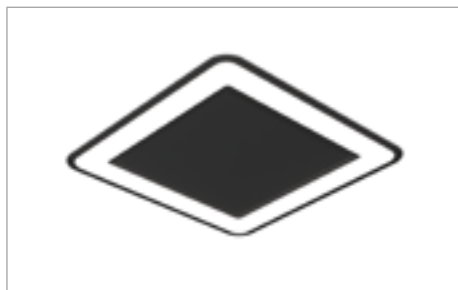




HIPSO BH D-M

without cover

Watt	Volt
3,8 W	24 VDC



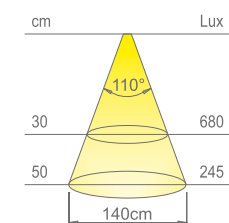
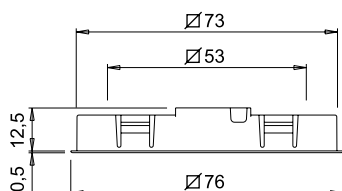
HIPSO TH D-M

with cover

Watt	Volt
3,8 W	24 VDC



HIPSO D-Motion integrates a light source that enables the dynamic and gradual selection of the colour temperature of the luminaire. The control systems are supplied separately. The colour temperature of HIPSO D-Motion can also be selected from the HIPSO D-M TDM switch.



* values referred to HIPSO D-M

Colour appearance	D-MOTION white
Colour temperature	2700 - 4000 K
Luminous flux	450 Lm
Luminous efficiency	118 lm/W
CRI	Ra ≥ 80

HIPSO D-M

recessed LED luminaire

HIPSO D-M is a luminaire with perimeter light source integrated in a support installed in a blind groove (HIPSO BH D-M) or on a through hole (HIPSO TH D-M). The 2000 mm power cord output with Micro24 connector is axial or radial to the installation surface. Available with painted steel and black touch finishes. Power supply and colour temperature control system not included. To be ordered separately.

Patented



touch black



steel





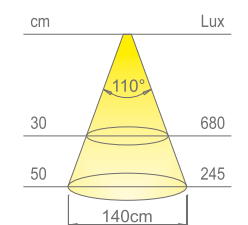
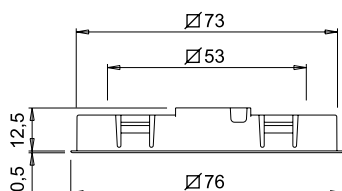
HIPSO D-M TDM

with touch dimmer master switch

Watt	Volt
3,8 W	24 VDC



The touch dimmer switch enables the individual luminaire and those connected to the output cable of HIPSO D-M TDM to be switched on and off, the brightness to be adjusted (5-100%) and the colour temperature to be selected (2700 K or 4000 K).



* values referred to HIPSO D-M

Colour appearance	D-MOTION white
Colour temperature	2700 - 4000 K
Luminous flux	450 Lm
Luminous efficiency	118 lm/W
CRI	Ra ≥ 80

HIPSO D-M TDM

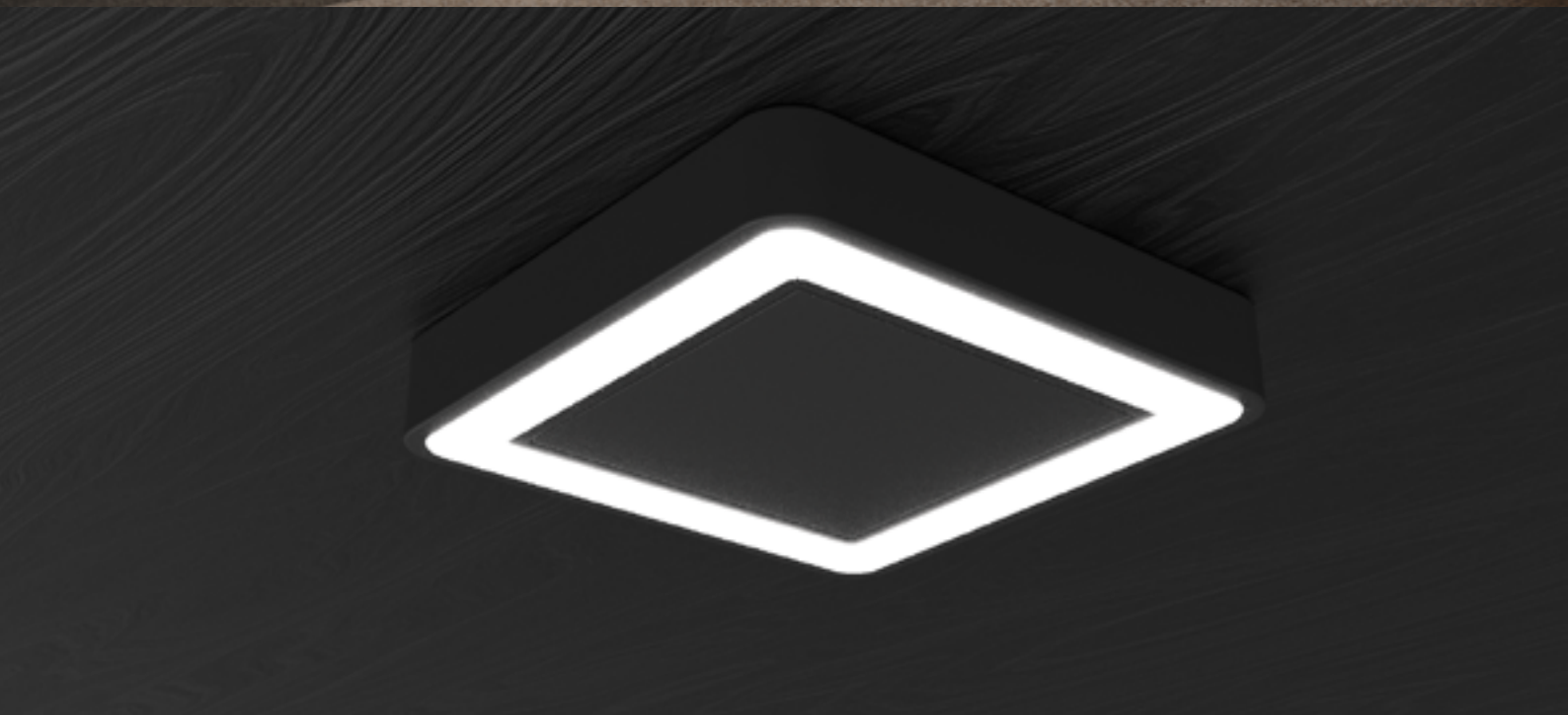


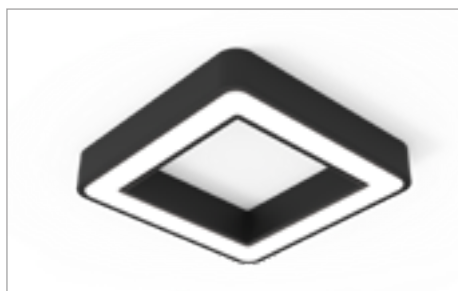
recessed LED luminaire with touch dimmer master switch

HIPSO D-M TDM is a luminaire with perimeter light source integrated in a support installed in a blind or through hole. Configured with touch dimmer master switch, safe even when it comes into contact with wet hands, used to switch on and off, control the brightness and to select the colour temperature from the two available, of the individual luminaire and those connected to the output cable. Available with painted steel and black touch finishes. Power supply not included. To be ordered separately.

Patented



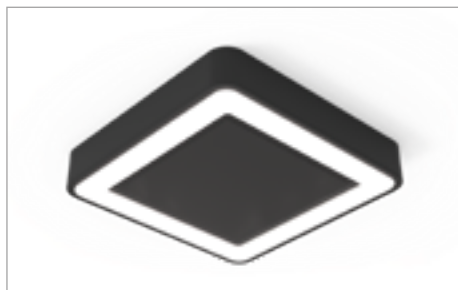




HIPSO BH SP D-M

without cover

Watt	Volt
3,8 W	24 VCD



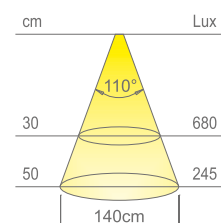
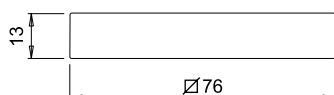
HIPSO TH SP D-M

with cover

Watt	Volt
3,8 W	24 VDC



HIPSO SP integrates a light source that enables the dynamic and gradual selection of the colour temperature of the luminaire. The control systems are supplied separately. The colour temperature of HIPSO SP D-M can also be selected from the HIPSO SP D-M TDM switch.



* values referred to HIPSO D-M

Colour appearance	D-MOTION white
Colour temperature	2700 - 4000 K
Luminous flux	450 Lm
Luminous efficiency	118 lm/W
CRI	Ra ≥ 80

HIPSO SP D-M

surface LED luminaire

HIPSO SP D-M is a luminaire with perimeter light source integrated in a support installed on the surface, configured with a cover (HIPSO TH SP D-M) or without (HIPSO BH SP D-M). The 2000 mm power cord output with Micro24 connector is axial or radial to the installation surface. Available with painted steel and black touch finishes. Power supply and colour temperature control system not included. To be ordered separately.

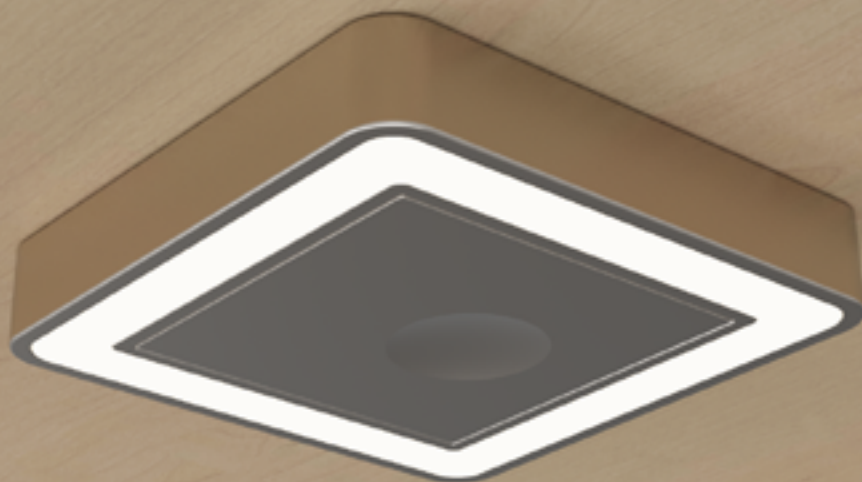
Patented



touch black



steel





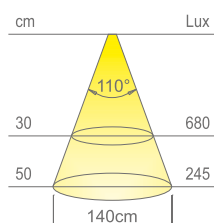
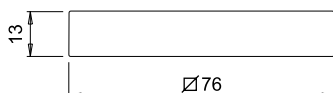
HIPSO SP D-M TDM

with touch dimmer master switch

Watt	Volt
3,8 W	24 VDC



The touch dimmer switch enables the individual luminaire and those connected to the output cable of HIPSO SP D-M TDM to be switched on and off, the brightness to be adjusted (5-100%) and the colour temperature to be selected (2700 K or 4000 K).



* values referred to HIPSO D-M

Colour appearance	D-MOTION white
Colour temperature	2700 - 4000 K
Luminous flux	450 Lm
Luminous efficiency	118 lm/W
CRI	Ra ≥ 80

HIPSO SP D-M TDM



surface LED luminaire with touch dimmer master switch

HIPSO SP D-M TDM is a luminaire with perimeter light source integrated in a support installed on the surface. Configured with touch dimmer master switch, safe even when it comes into contact with wet hands, used to switch on and off, control the brightness and to select the colour temperature from the two available, of the individual luminaire and those connected to the output cable. Available with painted steel and black touch finishes.

Patented





DOMUS LINE

Domus Line srl
Via Maestri del Lavoro, 1
I-33080 Porcia (PN) Italy

domusline.com