



HOLL BH SP

without cover

Watt	Volt
3,8W	24VDC

24Vdc

Micro 24

2700

4000



HOLL TH SP

with cover

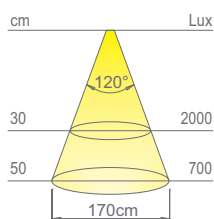
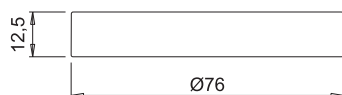
Watt	Volt
3,8W	24VDC

24Vdc

Micro 24

2700

4000



values referred to
HOLL SP 4000 K

Colour appearance	super warm white	natural white
Colour temperature	2700 K	4000 K
Luminous flux	520 lm	550 lm
Luminous efficiency	137 lm/W	154 lm/W
CRI	Ra 82	Ra 83

HOLL SP

surface-mounted LED spotlight

HOLL SP is a surface-mounted LED spotlight for surface installation, recommended for applications in any type of furniture element. Made from thermoplastic polymers, it integrates a dimmable single colour LED perimeter light source and an opal diffuser. HOLL SP is available without cover (HOLL BH SP), or with cover (HOLL TH SP). The luminaire is supplied with a 2000mm power cable, which exits either axially or radially to the mounting surface. Power supply not included, to be ordered separately.

Registered design.



steel



graphite



black touch



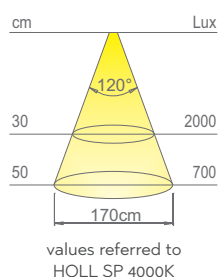
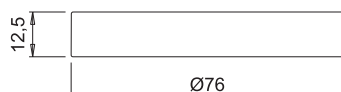
HOLL SP TDM

with touch-dimmer master switch

Watt	Volt
3,8W	24VDC



The touch-dimmer master switch allows switching on, switching off and adjusting the brightness (10-100%) for the individual luminaire and those connected to the output cable of HOLL SP TDM.



Colour appearance	super warm white	natural white
Colour temperature	2700 K	4000 K
Luminous flux	520 lm	550 lm
Luminous efficiency	137 lm/W	154 lm/W
CRI	Ra 82	Ra 83

HOLL SP TDM

surface-mounted LED spotlight

HOLL SP TDM is a surface-mounted LED spotlight with symmetrical light projection, recommended for applications in any type of furniture element. Made from thermoplastic polymers, it integrates a dimmable single colour LED perimeter light source and a master touch-dimmer switch, allowing for switching on, switching off and adjusting the brightness (10-100%) for the individual luminaire and those connected to the HOLL SP TDM output cable. The luminaire is supplied with 2000mm power cables that exit both axially and radially to the mounting surface. Power supply not included, to be ordered separately.

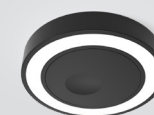
Registered design.



steel



graphite



black touch

This product contains a light source of energy efficiency class **E** (2700 K) and **D** (4000 K).



HOLL BH SP D-M

without cover

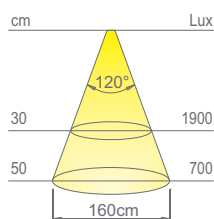
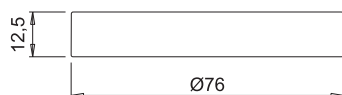
Watt	Volt
3,8W	24VDC



HOLL TH SP D-M

with cover

Watt	Volt
3,8W	24VDC



values referred to
HOLL SP D-M

Colour appearance	white D-Motion
Colour temperature	2700 - 4000 K
Luminous flux	430 lm
Luminous efficiency	120 lm/W
CRI	Ra 81

HOLL SP D-M



surface-mounted dual colour LED spotlight

HOLL SP D-Motion is a surface-mounted LED spotlight with symmetrical light projection, recommended for applications in any type of furniture element. Made from thermoplastic polymers, it integrates a dimmable dual colour LED perimeter light source and an opaline diffuser. The luminaire is supplied with a 2000mm power cable that exits both axially and radially to the mounting surface. Power supply not included, to be ordered separately.

Registered design.



steel



graphite



black touch

This product contains a light source of energy efficiency class **E**.



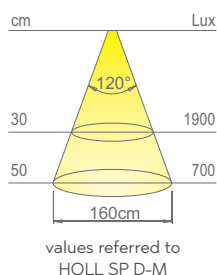
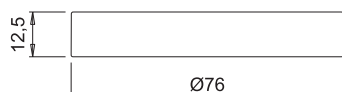
HOLL SP D-M TDM

with touch-dimmer master switch

Watt	Volt
3,8W	24VDC



The touch-dimmer master switch allows switching on, switching off, adjusting the brightness (10-100%), and selecting of colour temperature in WHC (White Changeable) mode for the individual luminaire and those connected to the output cable of HOLL SP D-M TDM.



Colour appearance	white D-Motion
Colour temperature	2700 - 4000 K
Luminous flux	430 lm
Luminous efficiency	120 lm/W
CRI	Ra 81

HOLL SP D-M TDM



surface-mounted dual colour LED spotlight

HOLL SP D-Motion TDM is a surface-mounted LED spotlight with symmetrical light projection, recommended for applications in any type of furniture element. Made from thermoplastic polymers, it integrates a dimmable dual colour LED perimeter light source and a master touch-dimmer switch, allowing for switching on, switching off, adjusting the brightness (10-100%), and selecting the colour temperature in WHC (White Changeable) mode for the individual luminaire and those connected to the HOLL SP D-M TDM output cable. The luminaire is supplied with 2000mm power cables that exit both axially and radially to the mounting surface. Power supply not included, to be ordered separately.

Registered design.



steel



graphite



black touch

This product contains a light source of energy efficiency class **E**.



HOLL BH SP D-MWA

without cover

Watt	Volt
3W	24VDC



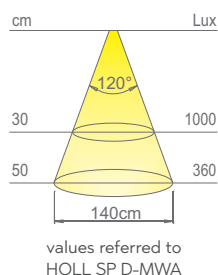
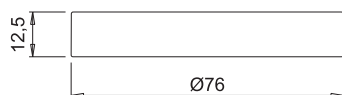
HOLL TH SP D-MWA

with cover

Watt	Volt
3W	24VDC



HOLL SP D-MWA must be connected to the output cable of HOLL SP D-MWA TDM, which enables progressive switching on, reverse sequence of switching off, light intensity adjustment, and colour temperature selection for the individual luminaire and all those connected to it.



Colour appearance	white D-Motion
Colour temperature	2700 - 4000 K
Luminous flux	260 lm
Luminous efficiency	87 lm/W
CRI	Ra 82

HOLL SP D-MWA



surface-mounted dual colour wave LED spotlight

HOLL SP D-Motion Wave is a surface-mounted LED spotlight with symmetrical light projection, recommended for applications in any type of furniture element. Made from thermoplastic polymers, it integrates a dimmable dual colour wave LED perimeter light source with progressive switching on and reverse-sequence switching off functions. HOLL SP D-MWA is available without cover (HOLL BH SP D-MWA), or with cover (HOLL TH SP D-MWA). The luminaire is supplied with a 2000mm power cable that exits both axially and radially to the mounting surface. Power supply not included, to be ordered separately.

Registered design.



steel



graphite



black touch

This product contains a light source of energy efficiency class **F**.



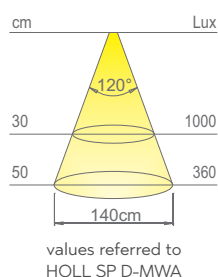
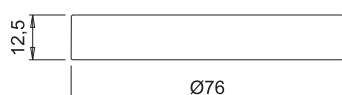
HOLL SP D-MWA TDM

with touch-dimmer master switch

Watt	Volt
3W	24VDC



The touch-dimmer master switch allows progressive switching on, reverse sequence switching off, adjusting the brightness (10-100%), and selecting the colour temperature in WHC (White Changeable) mode for the individual luminaire and those connected to the output cable of HOLL SP D-MWA TDM.



Colour appearance	white D-Motion
Colour temperature	2700 - 4000 K
Luminous flux	260 lm
Luminous efficiency	87 lm/W
CRI	Ra 82

HOLL SP D-MWA TDM



surface-mounted dual colour wave LED spotlight

HOLL SP D-Motion Wave TDM is a surface-mounted LED spotlight with symmetrical light projection, recommended for applications in any type of furniture element. Made from thermoplastic polymers, it integrates a dimmable dual colour wave LED perimeter light source and a touch-dimmer master switch allowing progressive switching on, reverse sequence switching off, adjusting the brightness (10-100%), and selecting the colour temperature in WHC (White Changeable) mode for the individual luminaire and those connected to the output cable of HOLL SP D-MWA TDM. The luminaire is supplied with 2000mm power cables that exit both axially and radially to the mounting surface. Power supply not included, to be ordered separately.

Registered design.



steel



graphite



black touch

This product contains a light source of energy efficiency class **F**.