

MATERIALE - MATERIAL - MATIÈRE

Plastica + Ferro (Plastic + Steel)
(Plastique + Acier)

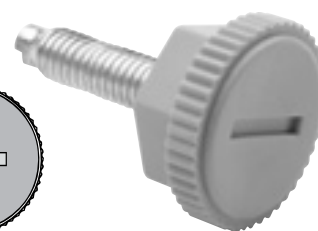
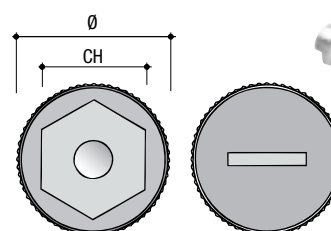
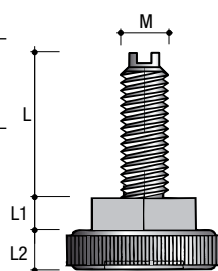
FINITURA - FINISH - FINITION

PNE - PGR

Piedino base rotonda/esagonale.

Leg w/round-hex base.
Pie vérin rond-hex.

Art.	Ø	M	CH	L	L1	L2		
PI12	22	M6	16	21	5	5,5	1.000	9



MATERIALE - MATERIAL - MATIÈRE

Plastica + Ferro (Plastic + Steel)
(Plastique + Acier)

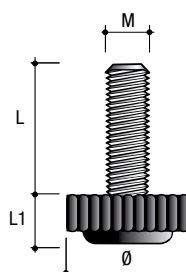
FINITURA - FINISH - FINITION

PNE

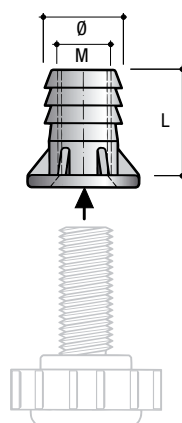
Piedino.

Leg.
Pied.

Art.	Ø	M	L	L1		
PI15	27,5	M8	30	11,5	500	8,90



Art.	M	L	Ø		
BP01	M6	14	8	2.500	11,3
BP02	M8	16	10	1.000	8,4
BP03	M10	17	12	1.000	11,3



Bussola per piedini.

Socket for legs.
Insert pour pieds.



MATERIALE - MATERIAL - MATIÈRE

Plastica (Plastic) (Plastique)

FINITURA - FINISH - FINITION

PNE - PGR

Piedino rotondo.

Round glide.
Pied rond.

Art.	Ø	H	F		
PI13	40	20	5	2.000	12,3

