

# Sistema di assemblaggio - Eccentrico Ø15

## Eccentric connecting fitting Ø15 • Ferrure d'assemblage Excentrique Ø15

**MATERIALE - MATERIAL - MATIÈRE**  
Zama (Zinc alloy) (Zamak)

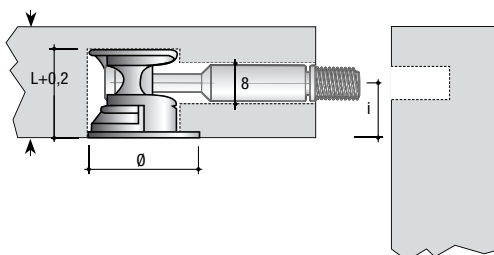
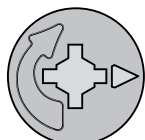
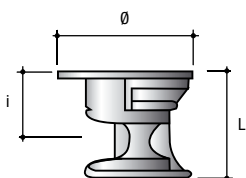
**FINITURA - FINISH - FINITION**  
ZL - ZZ - ZZT - ZZN - ZNL - ZBR  
ZO

**Eccentrico Ø 15**

Eccentric Ø 15  
Excentrique Ø 15

Art.	Ø	L	i			
<b>EC20</b>	15	12	7,75	15/16	2.000	7,90
<b>EC30</b>	15	13,5	9,30	18/19	2.000	8,40

**NEW**



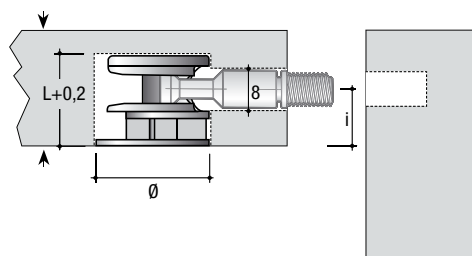
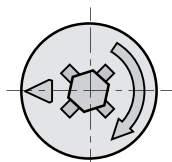
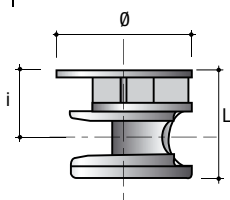
**MATERIALE - MATERIAL - MATIÈRE**  
Zama (Zinc alloy) (Zamak)

**FINITURA - FINISH - FINITION**  
ZL - ZZ - ZZT - ZZN - ZNL - ZBR - ZO

**Eccentrico Ø 15.**

Eccentric Ø 15.  
Excentrique Ø 15.

Art.	Ø	L	i			
<b>EC16</b>	15	10	6	12	2.000	7,9
<b>EC02</b>	15	12,5	8	16	2.000	9
<b>EC03</b>	15	13,8	9/9,5	18/20	2.000	11,9
<b>EC04</b>	15	17	12,5	25	2.000	14
<b>EC18</b>	15	19	14,5	28/30	1.250	10,3



**MATERIALE - MATERIAL - MATIÈRE**  
Zama (Zinc alloy) (Zamak)

**FINITURA - FINISH - FINITION**  
ZL - ZZ - ZZT - ZZN - ZNL - ZBR - ZO

**Eccentrico Power Ø 15.**

Eccentric Power Ø 15.  
Excentrique Power Ø 15.

Art.	Ø	L	i			
<b>EC13</b>	15	13,8	9	18	2.000	14,1

