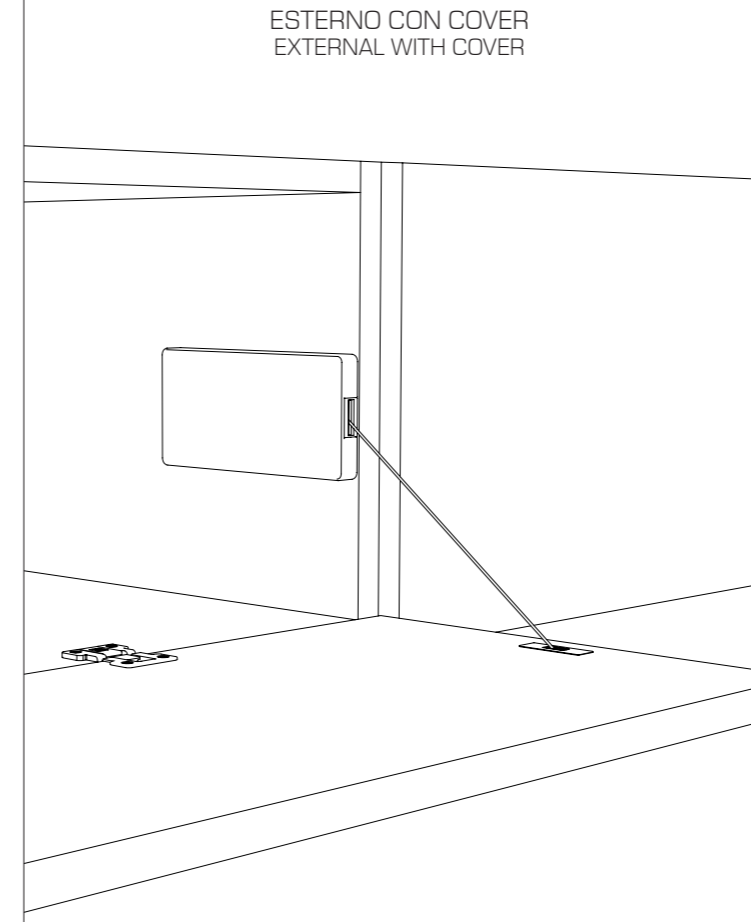
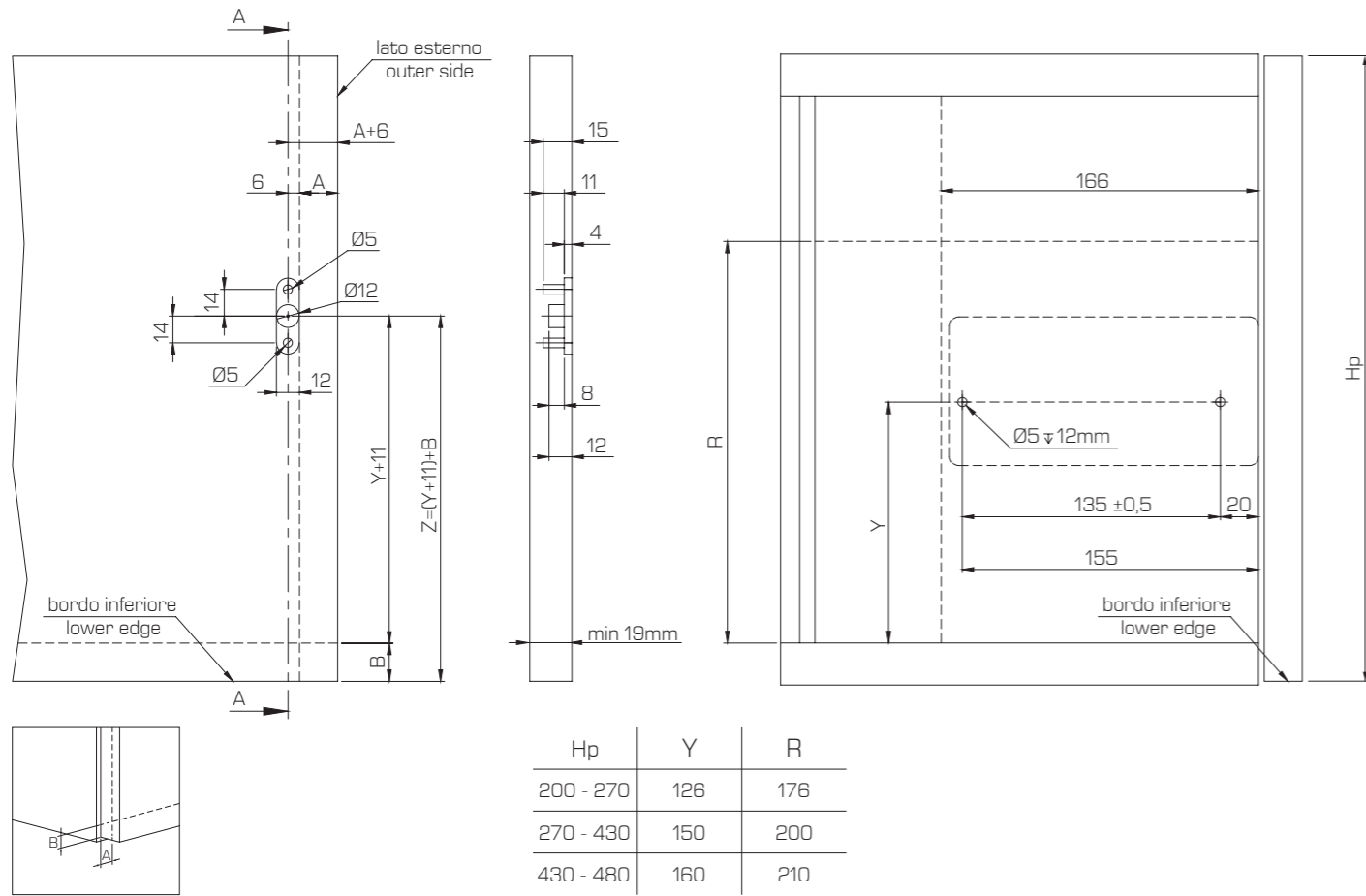
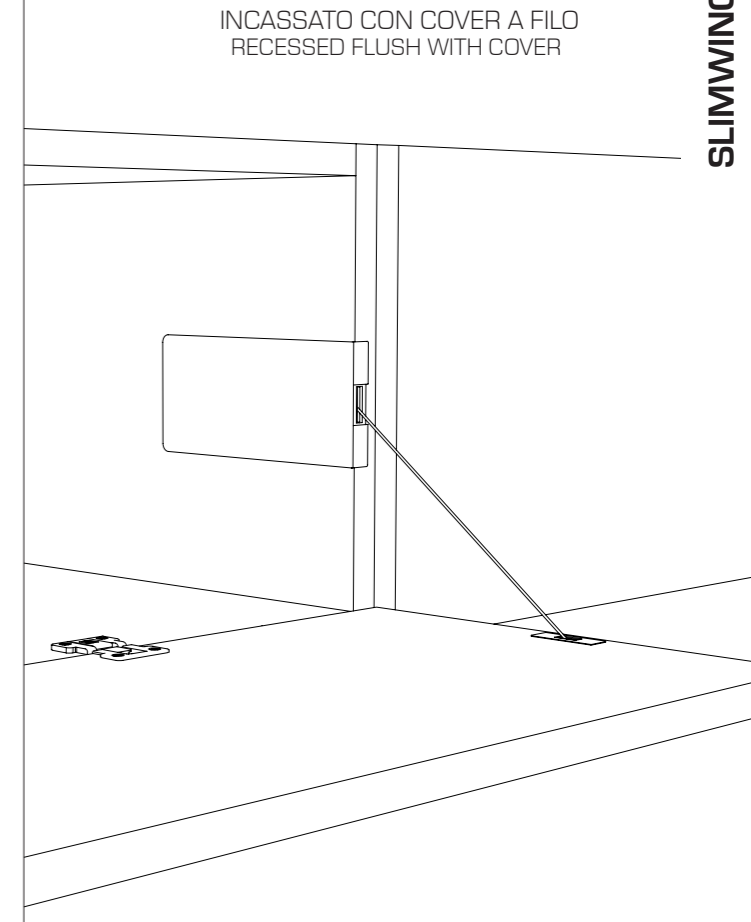


FORATURE (PER MONTAGGIO ESTERNO) DRILLINGS (FOR EXTERNAL MOUNTING)

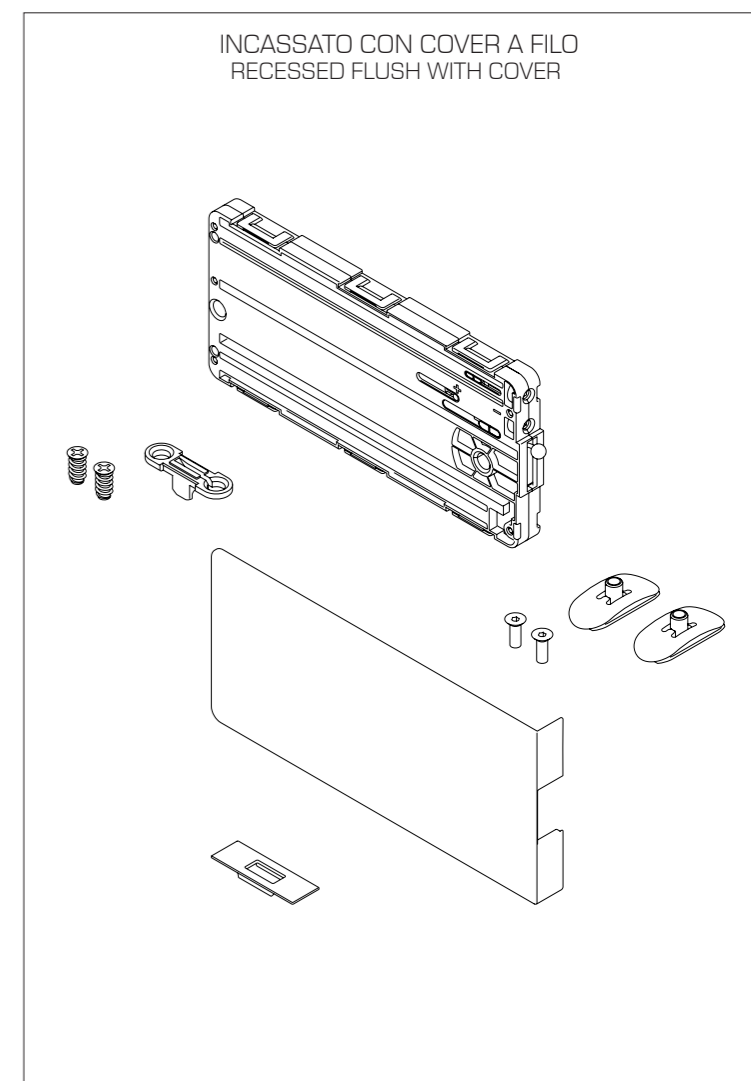
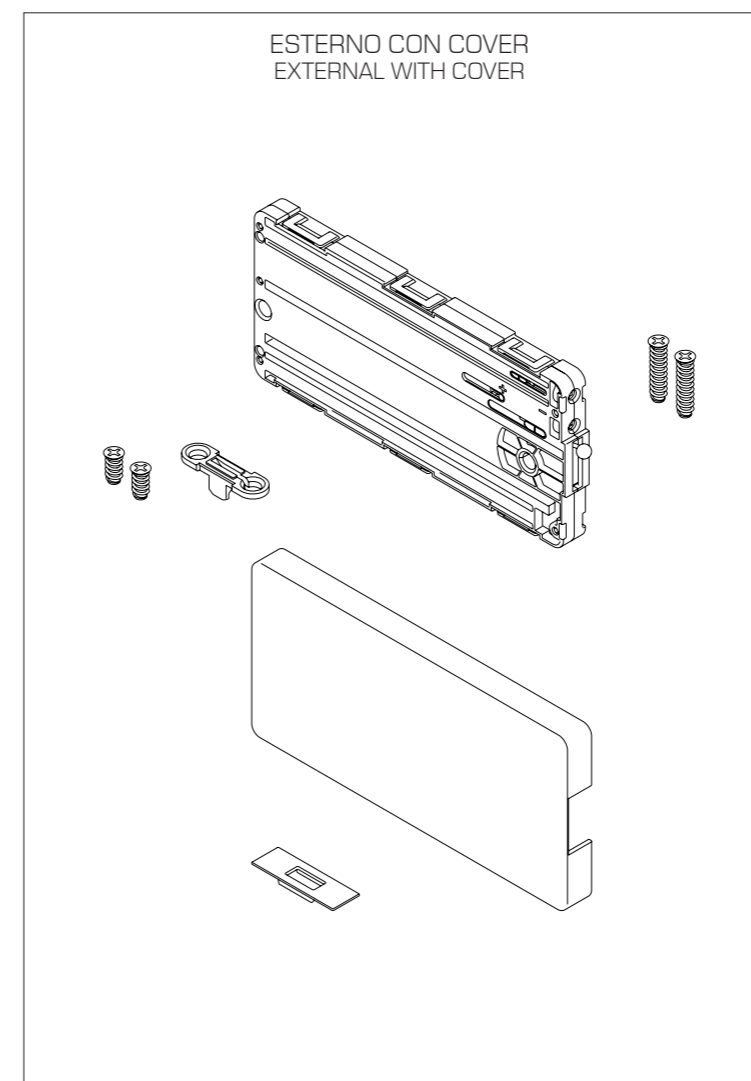
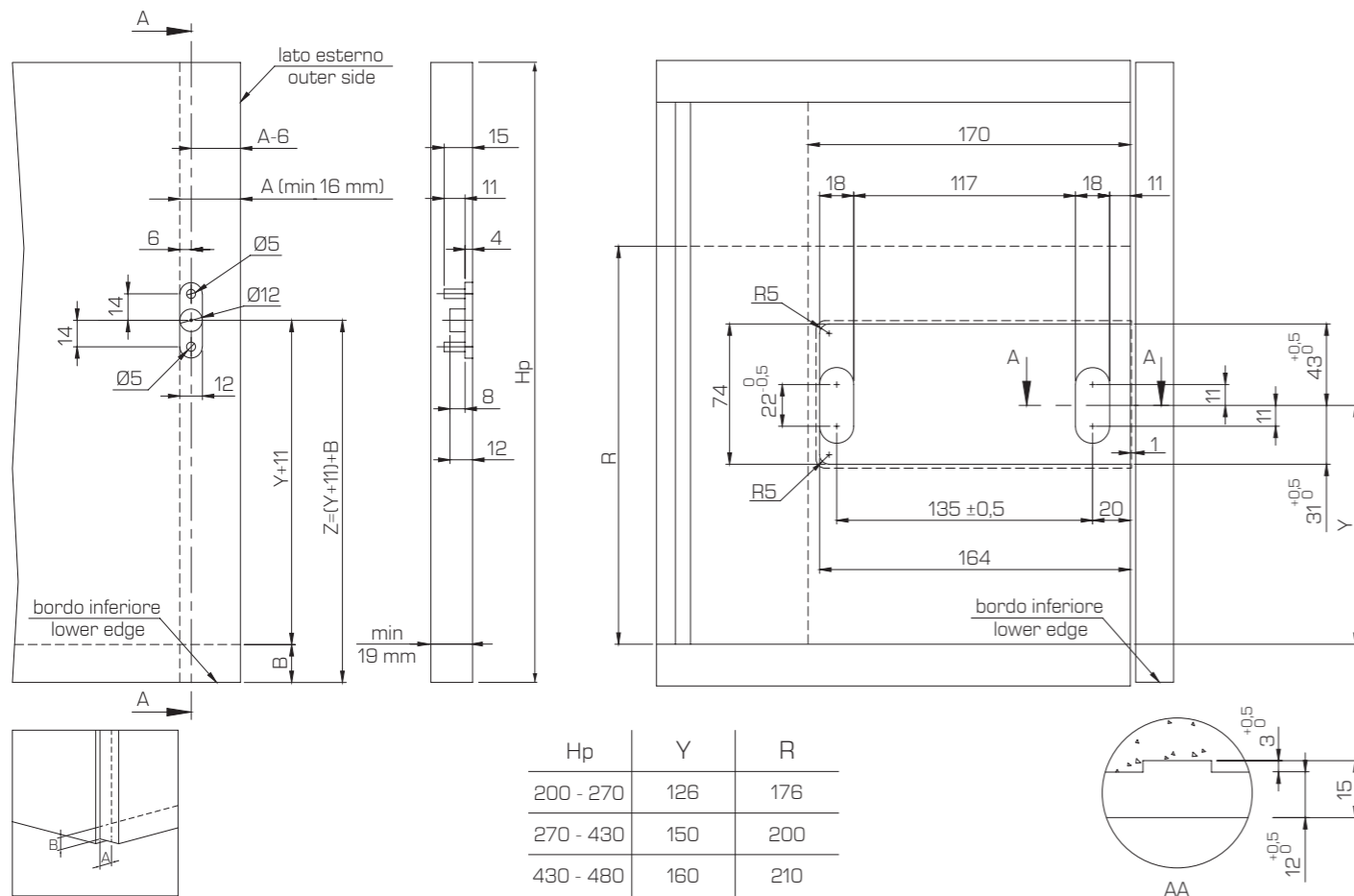


Istruzioni di montaggio e caratteristiche tecniche
Mounting instructions and technical data



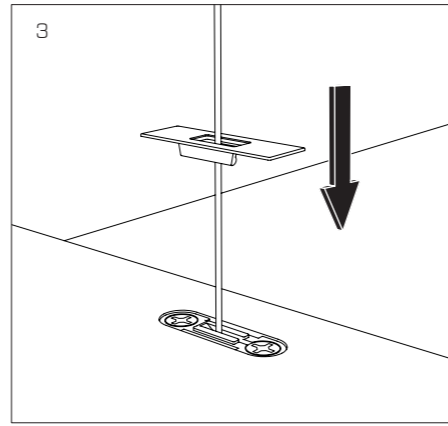
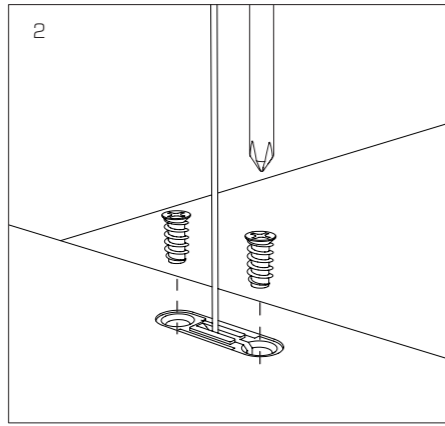
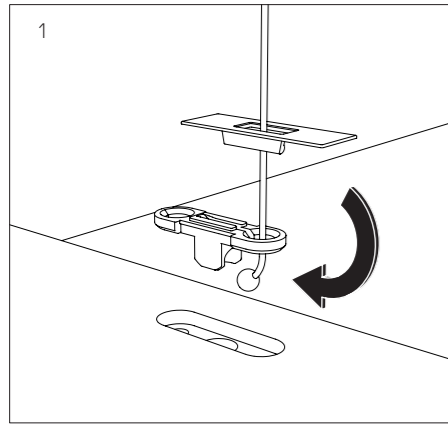
SISTEMI DI APERTURA
OPENING SYSTEMS

FORATURA SPALLA (PER MONTAGGIO INCASSATO) SIDE PANEL DRILLING (FOR RECESSED MOUNTING)

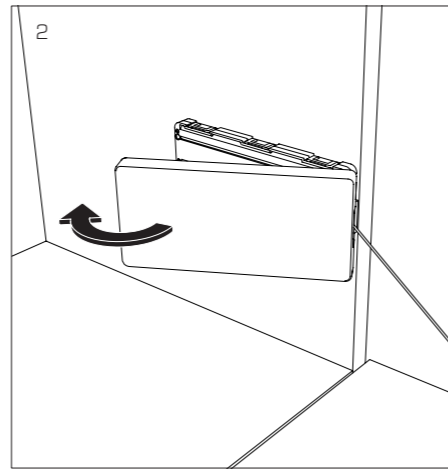
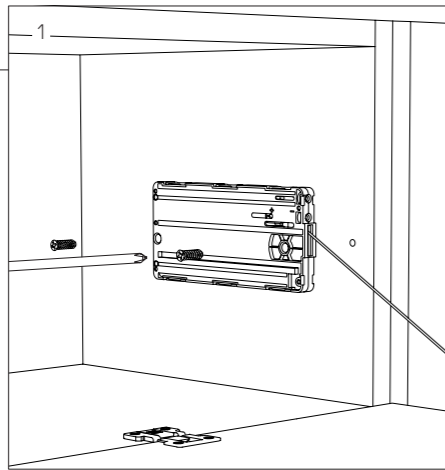


Cod. 61WSISTRMONTA

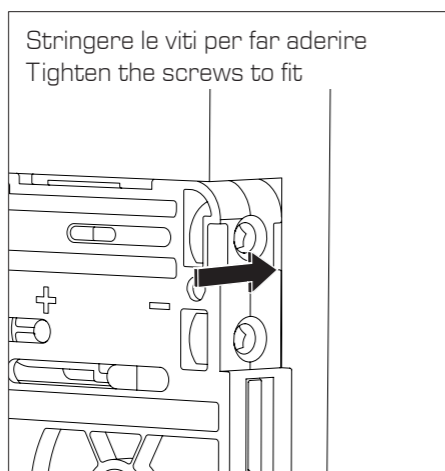
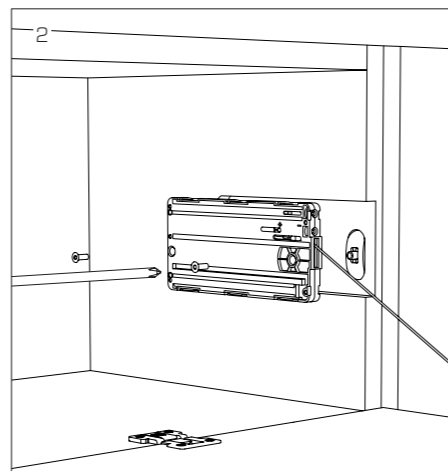
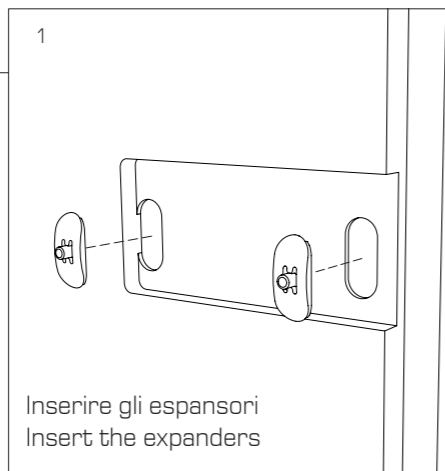
MONTAGGIO ATTACCO ANTA
DOOR'S CONNECTION MOUNTING



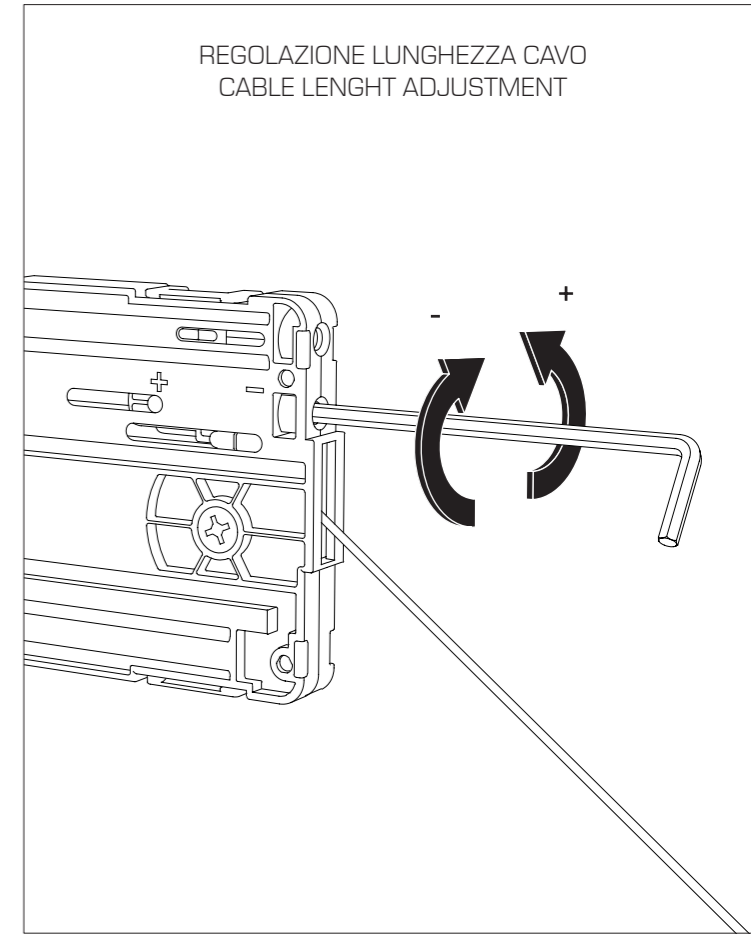
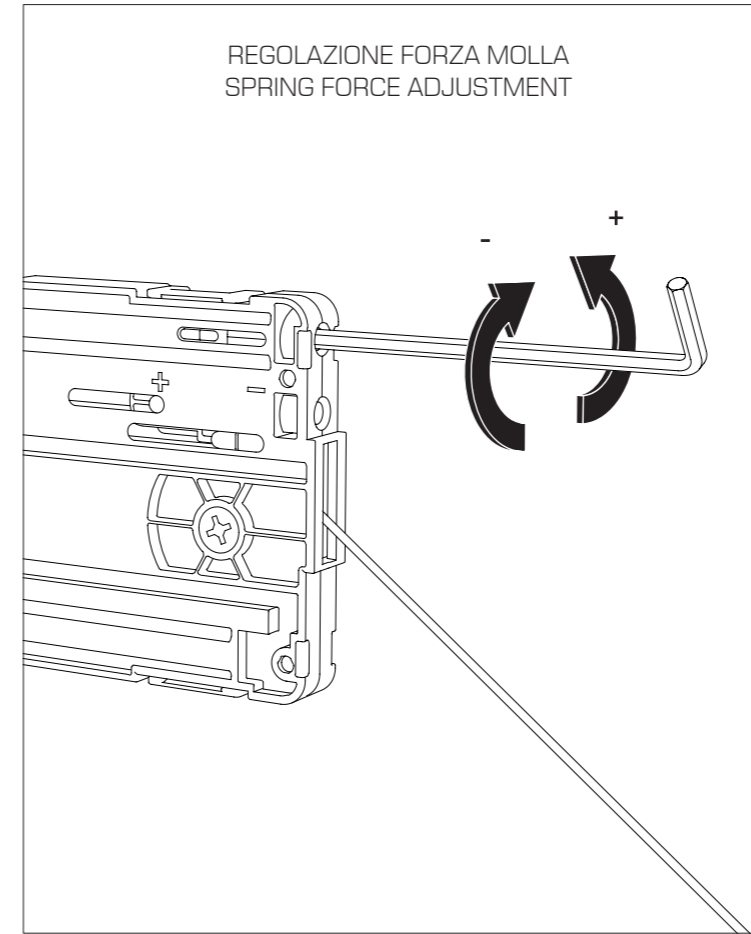
MONTAGGIO ESTERNO
EXTERNAL MOUNTING



MONTAGGIO INCASSATO
RECESSED MOUNTING



REGOLAZIONI (CHIAVE ESAGONALE 3 MM)
ADJUSTMENTS (3 MM ALLEN KEY)



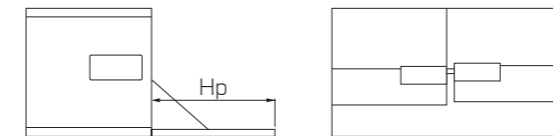
ATTENZIONE WARNING

Gli espansori devono essere ben appoggiati sul fondo della fresata.
The expanders must be well lean on the bottom of the drilling.

ATTENZIONE WARNING

Durante l'avvitamento, tenere appoggiato SlimWinch contro i due espansori.
While screwing, hold SlimWinch against the two expanders.

TABELLE PESI ANTA
DOOR WEIGHT TABLES



Cerniera 1 perno
Hinge 1 bolt

Hp	Molla 4 Spring 4		Molla 6 Spring 6		Molla 10 Spring 10		Molla 14 Spring 14		Molla 16 Spring 16		Molla 20 Spring 20	
	SLIMWINCH x1	SLIMWINCH x2	SLIMWINCH x1	SLIMWINCH x2	SLIMWINCH x1	SLIMWINCH x2	SLIMWINCH x1	SLIMWINCH x2	SLIMWINCH x1	SLIMWINCH x2	SLIMWINCH x1	SLIMWINCH x2
200 - 230	2,6 - 3,4	5,2 - 6,8	3,4 - 4,4	6,2 - 8,4	4,5 - 6,2	8,4 - 11,6	5,5 - 7,4	11,6 - 14,8	-	-	-	-
230 - 270	2,2 - 2,8	4,8 - 6	2,8 - 3,9	5,6 - 7,3	4 - 5,4	7,6 - 10,7	5,3 - 7,4	9,9 - 12,4	6,7 - 8,9	12,5 - 15,7	7,7 - 9,3	14 - 19,1
270 - 330	2,3 - 2,7	4,1 - 5,3	2,7 - 3,3	4,7 - 6,1	3,4 - 5,2	6,2 - 8,7	4,7 - 6,1	8,4 - 11	5,3 - 6,7	9,5 - 12,6	6,3 - 7,9	11,8 - 15
330 - 380	-	3,6 - 4,2	2,3 - 2,7	4 - 5,4	3 - 4,6	5,6 - 7,8	4 - 5,6	7,8 - 10,4	4 - 5,6	8 - 11,2	5,6 - 6,8	10,4 - 12,8
380 - 430	-	3,5 - 4,4	2,4 - 2,9	4,2 - 5,6	3,1 - 4,1	5,7 - 7,3	4,1 - 4,9	7,9 - 10,3	4 - 6	8 - 11,2	5,7 - 7,1	11,1 - 13,5
430 - 460	-	3 - 3,8	2 - 2,5	3,6 - 5,1	2,5 - 3,4	5,1 - 7,2	3,9 - 5,2	7,2 - 8,7	4 - 6,1	7,8 - 10,3	5,3 - 6,2	10,2 - 12
460 - 480	-	3,3 - 3,9	1,8 - 2,6	3,9 - 4,9	2,7 - 3,2	5 - 7,1	3,6 - 4,4	7 - 8,6	4 - 5,5	7,5 - 9,8	5,3 - 6,2	9,8 - 13

ATTENZIONE - WARNING

Il peso e la posizione della maniglia possono influenzare le prestazioni del meccanismo.
The weight and the position of the handle may influence the performance of the mechanism