





UNIKA
without switch

Watt	Volt
3,8W	24VDC

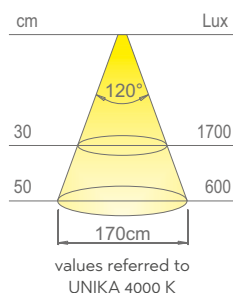
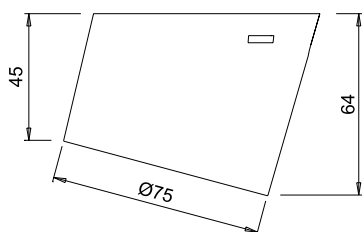


UNIKA TDM
with touch-dimmer master switch

Watt	Volt
3,8W	24VDC



The touch-dimmer master switch allows switching on, switching off, and adjusting the brightness (10-100%) of the individual luminaire and those connected to the output cable of UNIKA TDM.



Colour appearance	super warm white	natural white
Colour temperature	2700 K	4000 K
Luminous flux	455 lm	495 lm
Luminous efficiency	120 lm/W	130 lm/W
CRI	Ra 82	Ra 83

UNIKA | UNIKA TDM



surface-mounted LED spotlight

UNIKA is an asymmetrical light projection spotlight for surface mounting, recommended for under-cabinet application. Made of thermoplastic polymers, with a 15° inclined support, it integrates a dimmable LED perimeter light source. UNIKA can be configured with touch-dimmer master switch (UNIKA TDM) that allows switching on, switching off, and adjusting the brightness (10-100%) of the individual luminaire and those connected to the output cable of UNIKA TDM. The luminaire is supplied with 2000mm cables, exiting axially and radially towards the installation surface. Power supply not included, to be ordered separately.

Registered model.



steel



graphite



black touch

This product contains a class **F (2700 K)** and **E (4000 K)** energy efficiency light source.



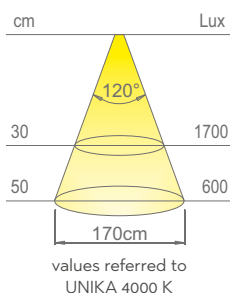
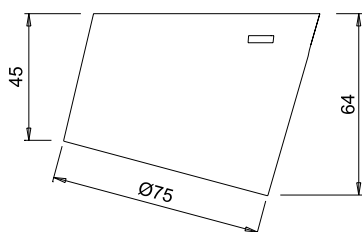
UNIKA SCK
with Schuko socket

Watt	Volt
3,8W	24VDC



UNIKA FB
with Franco-Belgian socket

Watt	Volt
3,8W	24VDC



Colour appearance	super warm white	natural white
Colour temperature	2700 K	4000 K
Luminous flux	455 lm	495 lm
Luminous efficiency	120 lm/W	130 lm/W
CRI	Ra 82	Ra 83

UNIKA SCK | UNIKA FB



surface-mounted LED spotlight with power socket

UNIKA is an asymmetrical light projection spotlight for surface mounting, recommended for under-cabinet application. Made of thermoplastic polymers, with a 15° inclined support, it integrates a dimmable LED perimeter light source. UNIKA can be configured with Schuko socket (UNIKA SCK) or French/Belgian socket (UNIKA FB). The luminaire is supplied with 2000mm cables, exiting axially and radially towards the installation surface. Power supply not included, to be ordered separately.

Registered model.



steel



graphite



black touch

This product contains a class **F (2700 K)** and **E (4000 K)** energy efficiency light source.



UNIKA USB

with double USB port

Watt	Volt
3,8W	24VDC

24Vdc

Micro 24

2700

4000



UNIKA USB-C

with double USB-C port

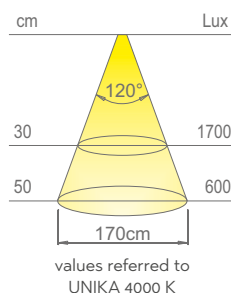
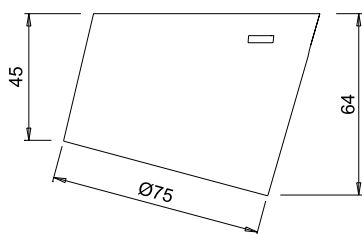
Watt	Volt
3,8W	24VDC

24Vdc

Micro 24

2700

4000



Colour appearance	super warm white	natural white
Colour temperature	2700 K	4000 K
Luminous flux	455 lm	495 lm
Luminous efficiency	120 lm/W	130 lm/W
CRI	Ra 82	Ra 83

UNIKA USB | UNIKA USB-C



surface-mounted LED spotlight with USB or USB-C ports

UNIKA is an asymmetrical light projection spotlight for surface mounting, recommended for under-cabinet application. Made of thermoplastic polymers, with a 15° inclined support, it integrates a dimmable LED perimeter light source. UNIKA can be configured with USB ports (UNIKA USB) or USB-C ports (UNIKA USB-C). The luminaire is supplied with 2000mm cables, exiting axially and radially towards the installation surface. Power supply not included, to be ordered separately.

Registered model.



steel



graphite



black touch

This product contains a class **F (2700 K)** and **E (4000 K)** energy efficiency light source.





UNIKA D-M

without switch

Watt	Volt
3,8W	24VDC



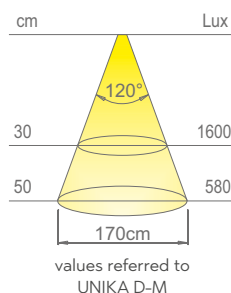
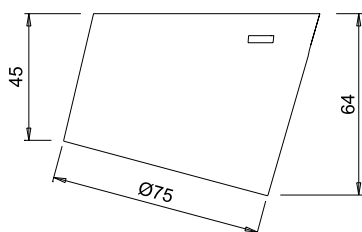
UNIKA D-M TDM

with touch-dimmer master switch

Watt	Volt
3,8W	24VDC



The touch-dimmer master switch allows switching on, switching off, adjusting the brightness (10-100%), and selecting of colour temperature in WHC (White Changeable) mode for the individual luminaire and those connected to the output cable of UNIKA D-M TDM.



Colour appearance	D-Motion white
Colour temperature	2700 - 4000 K
Luminous flux	455 lm
Luminous efficiency	120 lm/W
CRI	Ra 83

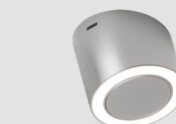
UNIKA D-M | D-M TDM

dual-colour surface-mounted LED spotlight

UNIKA D-Motion is an asymmetrical light projection spotlight for surface mounting, recommended for under-cabinet application. Made of thermoplastic polymers, with a 15° inclined support, it integrates a dimmable dual-colour LED perimeter light source. UNIKA D-M can be configured with touch-dimmer master switch (UNIKA D-M TDM) which allows switching on, switching off, adjusting the brightness (10-100%), and selecting of colour temperature in WHC (White Changeable) mode for the individual luminaire and those connected to the output cable of UNIKA D-M TDM. The luminaire is supplied with 2000mm cables, exiting axially and radially towards the installation surface. Power supply not included, to be ordered separately.

Registered model.

This product contains a light source of energy efficiency class **E**.



steel



graphite



black touch



UNIKA D-M SCK

with Schuko socket

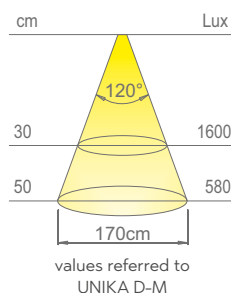
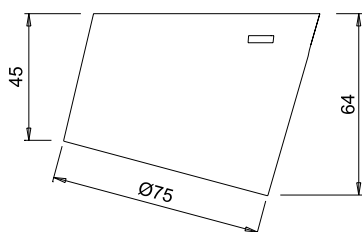
Watt	Volt
3,8W	24VDC



UNIKA D-M FB

with Franco-Belgian socket

Watt	Volt
3,8W	24VDC



Colour appearance	D-Motion white
Colour temperature	2700 - 4000 K
Luminous flux	455 lm
Luminous efficiency	120 lm/W
CRI	Ra 83

UNIKA D-M SCK | D-M FB

dual-colour surface-mounted LED spotlight with power socket

UNIKA D-Motion is an asymmetrical light projection spotlight for surface mounting, recommended for under-cabinet application. Made of thermoplastic polymers, with a 15° inclined support, it integrates a dimmable dual-colour LED perimeter light source. UNIKA D-M can be configured with a Schuko socket (UNIKA D-M SCK) or French/Belgian socket (UNIKA D-M FB). The luminaire is supplied with 2000mm cables, exiting axially and radially towards the installation surface. Power supply not included, to be ordered separately.

Registered model.



steel



graphite



black touch

This product contains a light source of energy efficiency class **E**.



UNIKA D-M USB

with double USB port

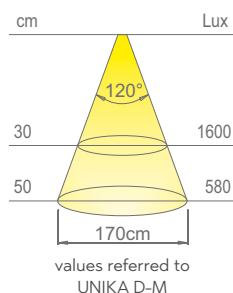
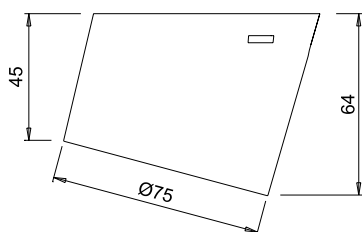
Watt	Volt
3,8W	24VDC



UNIKA D-M USB-C

with double USB-C port

Watt	Volt
3,8W	24VDC



Colour appearance	D-Motion white
Colour temperature	2700 - 4000 K
Luminous flux	455 lm
Luminous efficiency	120 lm/W
CRI	Ra 83

UNIKA D-M USB | D-M USB-C



dual-colour surface-mounted LED spotlight with USB or USB-C ports

UNIKA D-Motion is an asymmetrical light projection spotlight for surface mounting, recommended for under-cabinet application. Made of thermoplastic polymers, with a 15° inclined support, it integrates a dimmable dual-colour LED perimeter light source. UNIKA D-M can be configured with USB port (UNIKA D-M USB) or USB-C ports (UNIKA D-M USB-C). The luminaire is supplied with 2000mm cables, exiting axially and radially towards the installation surface. Power supply not included, to be ordered separately.

Registered model.



steel



graphite



black touch

This product contains a light source of energy efficiency class **E**.





UNIKA D-MWA

without switch

Watt	Volt
3W	24VDC



UNIKA D-MWA TDM

with touch-dimmer master switch

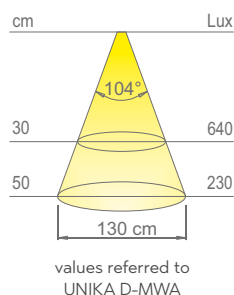
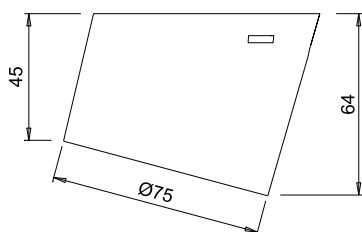
Watt	Volt
3W	24VDC



The touch-dimmer master switch allows progressive switching on, reverse sequence switching off, adjusting the brightness (10-100%), and selecting the colour temperature in WHC (White Changeable) mode for the individual luminaire and those connected to the output cable of UNIKA D-MWA TDM.



UNIKA D-MWA must be connected to the output cable of UNIKA D-MWA TDM.



Colour appearance	D-Motion white
Colour temperature	2700 - 4000 K
Luminous flux	300 lm
Luminous efficiency	100 lm/W
CRI	Ra 83

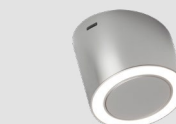
UNIKA D-MWA | D-MWA TDM



dual-colour wave surface-mounted LED spotlight

UNIKA D-Motion Wave is an asymmetrical light projection spotlight for surface mounting, recommended for under-cabinet application. Made of thermoplastic polymers, with a 15° inclined support, it integrates a dimmable dual-colour LED perimeter light source with progressive switching on and reverse-sequence switching off functions. UNIKA D-MWA can be configured with touch-dimmer master switch (UNIKA D-MWA TDM) allowing progressive switching on, reverse sequence switching off, adjusting the brightness (10-100%), and selecting the colour temperature in WHC (White Changeable) mode for the individual luminaire and those connected to the output cable of UNIKA D-MWA TDM. The luminaire is supplied with 2000mm cables, exiting axially and radially towards the installation surface. Power supply not included, to be ordered separately.

Registered model.



steel



graphite



black touch

This product contains a light source of energy efficiency class **F**.



UNIKA D-MWA SCK

with Schuko socket

Watt	Volt
3W	24VDC



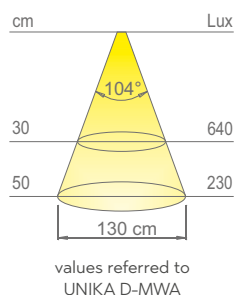
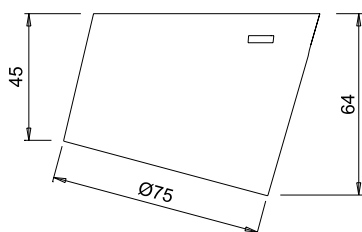
UNIKA D-MWA FB

with Franco-Belgian socket

Watt	Volt
3W	24VDC



UNIKA D-MWA must be connected to the output cable of UNIKA D-MWA TDM, which enables progressive switching on, reverse sequence of switching off, light intensity adjustment, and colour temperature selection for the individual luminaire and all those connected to it.



Colour appearance	D-Motion white
Colour temperature	2700 - 4000 K
Luminous flux	300 lm
Luminous efficiency	100 lm/W
CRI	Ra 83

UNIKA D-MWA SCK | D-MWA FB



dual-colour wave surface-mounted LED spotlight with power socket

UNIKA D-Motion Wave is an asymmetrical light projection spotlight for surface mounting, recommended for under-cabinet application. Made of thermoplastic polymers, with a 15° inclined support, it integrates a dimmable dual-colour LED perimeter light source. UNIKA D-MWA can be configured with a Schuko socket (UNIKA D-MWA SCK) or French/Belgian socket (UNIKA D-MWA FB), and connected to UNIKA D-MWA TDM with a touch-dimmer master switch, which allows switching on gradually, switching off with the reverse sequence, adjusting the light intensity (10-100%) and selecting the colour temperature in WHC (White Changeable) mode. The luminaire is supplied with 2000mm cables, exiting axially and radially towards the installation surface. Power supply not included, to be ordered separately.

Registered model.

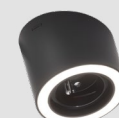
This product contains a light source of energy efficiency class **F**.



steel



graphite



black touch



UNIKA D-MWA USB

with double USB port

Watt	Volt
3W	24VDC



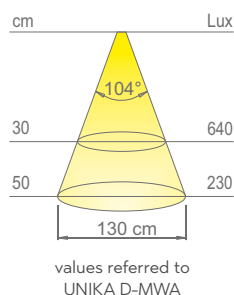
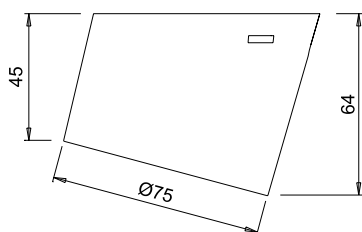
UNIKA D-MWA USB-C

with double USB-C port

Watt	Volt
3W	24VDC



UNIKA D-MWA must be connected to the output cable of UNIKA D-MWA TDM, which enables progressive switching on, reverse sequence of switching off, light intensity adjustment, and colour temperature selection for the individual luminaire and all those connected to it.



Colour appearance	D-Motion white
Colour temperature	2700 - 4000 K
Luminous flux	300 lm
Luminous efficiency	100 lm/W
CRI	Ra 83

UNIKA D-MWA USB | D-MWA USB-C



dual-colour surface-mounted LED spotlight with USB or USB-C ports

UNIKA D-Motion Wave is an asymmetrical light projection spotlight for surface mounting, recommended for under-cabinet application. Made of thermoplastic polymers, with a 15° inclined support, it integrates a dimmable dual-colour LED perimeter light source with progressive switching on and reverse-sequence switching off functions. UNIKA D-MWA can be configured with USB (UNIKA D-MWA USB) or USB-C ports (UNIKA D-MWA USB-C). The luminaire is supplied with 2000mm cables, exiting axially and radially towards the installation surface. Power supply not included, to be ordered separately.

Registered model.



steel



graphite



black touch

This product contains a light source of energy efficiency class **F**.